

Active Recombinant Sheep CSF2 protein, His-GST-tagged

Cat. No. CSF2-2735S Lot. No. (See product label)

SPECIFICATION

Product Overview	Active Recombinant Sheep CSF2 protein(P28773)(18~144 aa), fused with N-terminal His tag and GST tag, was expressed in E.coli.
Species	Sheep
Source	E.coli
ProteinLength	18-144 aa
Form	Lyophilized from sterile PBS, pH7.4, containing 0.01% SKL, 1mM DTT, 5% Trehalose and Proclin300.
Bio-activity	<p>Granulocyte-macrophage colony-stimulating factor (GM-CSF), also known as colony-stimulating factor 2 (CSF2), is a monomeric glycoprotein that functions as a cytokine — it is a white blood cell growth factor. GM-CSF also has some effects on mature cells of the immune system. These include, for example, inhibiting neutrophil migration and causing an alteration of the receptors expressed on the cells surface. Besides, the proliferation of TF-1 cell line GM-CSF basic-dependent, thus, the activity of GM-CSF is usually measured by a cell proliferation assay using TF-1 cells. TF-1 cells were seeded into triplicate wells of 96-well plates at a density of 8,000 cells/well with 2% serum standard 1640 which contains various concentrations of recombinant sheep GM-CSF. After incubated for 2 days, cells were observed by inverted microscope and cell proliferation was measured by Cell Counting Kit-8 (CCK-8). Briefly, 10 µof CCK-8 solution was added to each well of the plate, then the</p>

 Tel: 1-631-559-9269 1-516-512-3133

 Email: info@creative-biomart.com  Fax: 1-631-938-8127

 45-1 Ramsey Road, Shirley, NY 11967, USA

absorbance at 450 nm was measured using a microplate reader after incubating the plate for 2-4 hours at 37°C. Proliferation of TF-1 cells after incubation with GM-CSF for 2 days observed by inverted microscope was shown. Cell viability was assessed by CCK-8 (Cell Counting Kit-8) assay after incubation with recombinant sheep GM-CSF for 2 days. It was obvious that GM-CSF significantly increased cell viability of TF-1 cells. The ED50 is 13.9 ng/ml.

Molecular Mass	44.4kDa
Endotoxin	<1.0EU per 1µg (determined by the LAL method).
Purity	> 90% as determined by SDS-PAGE.
Storage	Avoid repeated freeze/thaw cycles. Store at -20°C for 12 months. Aliquot and store at -80°C for 12 months.
Reconstitution	Reconstitute in 10mM PBS (pH7.4) to a concentration of 0.1-1.0 mg/mL. Do not vortex.

GENE INFORMATION

Gene Name	CSF2 colony stimulating factor 2 (granulocyte-macrophage) [<i>Ovis aries</i>]
Official Symbol	CSF2
Synonyms	CSF2; colony stimulating factor 2 (granulocyte-macrophage); granulocyte-macrophage colony-stimulating factor; CSF; GM-CSF; colony-stimulating factor; granulate-macrophage stimulating factor; GMCSF;
Gene ID	443400

 Tel: 1-631-559-9269 1-516-512-3133

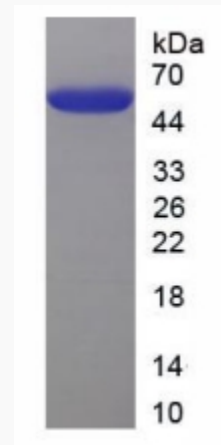
 Email: info@creative-biomart.com  Fax: 1-631-938-8127

 45-1 Ramsey Road, Shirley, NY 11967, USA

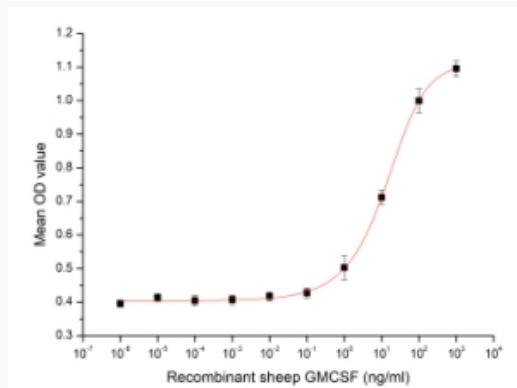
mRNA Refseq [NM_001009805](#)

Protein Refseq [NP_001009805](#)

SDS-PAGE



Activity



 Tel: 1-631-559-9269 1-516-512-3133

 Email: info@creative-biomart.com  Fax: 1-631-938-8127

 45-1 Ramsey Road, Shirley, NY 11967, USA