

## Recombinant Rhesus CSF2 protein

**Cat. No.** CSF2-360R    **Lot. No.** (See product label)

### SPECIFICATION

<b>Product Overview</b>	Recombinant Rhesus CSF2 protein was expressed in Escherichia coli.
<b>Species</b>	Rhesus macaque
<b>Source</b>	E.coli
<b>ProteinLength</b>	127
<b>Description</b>	Granulocyte-Macrophage Colony Stimulating Factor (GM-CSF) is secreted by a number of different cell types (including activated T cells, B cells, macrophages, mast cells, endothelial cells and fibroblasts) in response to cytokine or immune and inflammatory stimulation. It was initially characterized as a growth factor that can support the in vitro colony formation of granulocyte-macrophage progenitors and has functions of stimulates the growth and differentiation of hematopoietic precursor cells from various lineages. GM-CSF has also been reported to have a functional role on non-hematopoietic cells and can induce human endothelial cells to migrate and proliferate. Additionally, it can stimulate the proliferation of a number of tumor cell lines, including osteogenic sarcoma, carcinoma and adenocarcinoma cell lines. It is reported that GM-CSF has no biological effects across species.
<b>Form</b>	Lyophilized from a 0.2µm filtered concentrated solution in PBS, pH 7.4.
<b>Bio-activity</b>	Fully biologically active when compared to standard. The ED50 as determined by a cell proliferation assay using human TF-1 cells is less than 0.1 ng/ml, corresponding to a specific activity of > 1.0 ×

 Tel: 1-631-559-9269    1-516-512-3133

 Email: [info@creative-biomart.com](mailto:info@creative-biomart.com)     Fax: 1-631-938-8127

 45-1 Ramsey Road, Shirley, NY 11967, USA

	10 <sup>7</sup> IU/mg.
<b>Molecular Mass</b>	Approximately 14.4 kDa, a single non-glycosylated polypeptide chain containing 127 amino acids.
<b>AA Sequence</b>	APARSPSPGTQPWEHVNAIQEARLLNLSRDAAEMNKTVEVSEMFDLQEPSCLQ TRLELYKQGLQGSLTKLKGPLTMMASHYKQHCPPTPETSCATQIITFQSFKENLKDF LLVIPFDCWEPVQE
<b>Endotoxin</b>	Less than 1 EU/μg of rRhGM-CSF as determined by LAL method.
<b>Purity</b>	>98% by SDS-PAGE and HPLC analysis.
<b>Storage</b>	Use a manual defrost freezer and avoid repeated freeze-thaw cycles. 12 months from date of receipt, -20 to -70 centigrade as supplied. 1 month, 2 to 8 centigrade under sterile conditions after reconstitution. 3 months, -20 to -70 centigrade under sterile conditions after reconstitution.
<b>Reconstitution</b>	We recommend that this vial be briefly centrifuged prior to opening to bring the contents to the bottom. Reconstitute in sterile distilled water or aqueous buffer containing 0.1 % BSA to a concentration of 0.1-1.0 mg/mL. Stock solutions should be apportioned into working aliquots and stored at ≤-20 centigrade. Further dilutions should be made in appropriate buffered solutions.

## GENE INFORMATION

<b>Gene Name</b>	CSF2
<b>Official Symbol</b>	CSF2
<b>Synonyms</b>	Granulocyte/Macrophage Colony-Stimulating Factor, CSF-2, MGI-1GM, Pluripoietin-α

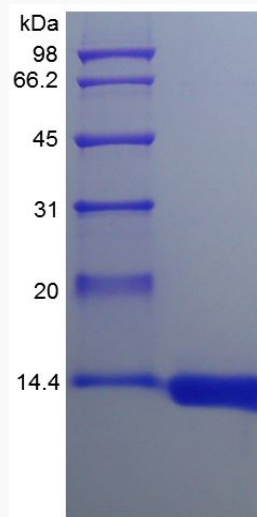
 Tel: 1-631-559-9269 1-516-512-3133

 Email: [info@creative-biomart.com](mailto:info@creative-biomart.com)  Fax: 1-631-938-8127

 45-1 Ramsey Road, Shirley, NY 11967, USA

Gene ID	574371
mRNA Refseq	NM_001032949.2
Protein Refseq	NP_001028121.1
UniProt ID	Q9GL44

SDS-PAGE of CSF2-360R



 Tel: 1-631-559-9269 1-516-512-3133

 Email: [info@creative-biomart.com](mailto:info@creative-biomart.com)  Fax: 1-631-938-8127

 45-1 Ramsey Road, Shirley, NY 11967, USA