

Recombinant Bovine Colony Stimulating Factor 2 (granulocyte-macrophage)

Cat. No. CSF2-375B **Lot. No.** (See product label)

SPECIFICATION

Product Overview	Recombinant Bovine CSF2 was expressed in HEK293T cells.
Species	Bovine
Source	HEK293
Description	PBP011 is a tissue culture supernatant containing active bovine CSF2, a cytokine that stimulates the growth and differentiation of hematopoietic precursor cells from various lineages, including granulocytes, macrophages, eosinophils and erythrocytes.
Form	Tissue Culture Supernatant from HEK293T cells expressing recombinant bovine CSF - lyophilized.
Application	Functional Assays
Preservative/Stabilisers	1% Bovine Serum Albumin.
Storage	Prior to reconstitution store at +4°C. After reconstitution store at +4°C or at -20°C if preferred. This product should be stored undiluted. Avoid repeated freezing and thawing as this may denature the protein. Should this product contain a precipitate we recommend microcentrifugation before use.

GENE INFORMATION

 Tel: 1-631-559-9269 1-516-512-3133

 Email: info@creative-biomart.com  Fax: 1-631-938-8127

 45-1 Ramsey Road, Shirley, NY 11967, USA

Gene Name	CSF2 colony stimulating factor2 (granulocyte-macrophage) [Bos taurus]
Official Symbol	CSF2
Synonyms	CSF2; colonystimulating factor 2 (granulocyte-macrophage); CSF; GMCSF; GM-CSF;granulocyte-macrophage colony-stimulating factor; colony-stimulating factor
Gene ID	281095
mRNA Refseq	NM_174027
Protein Refseq	NP_776452
Chromosome Location	7
Pathway	Amoebiasis;Cytokine Signaling in Immune system; Cytokine-cytokine receptor interaction;Cytokines and Inflammatory Response (BioCarta); Fc epsilon RI signalingpathway; HTLV-I infection; Hematopoietic cell lineage; Immune System;Interleukin receptor SHC signaling; Interleukin-2 signaling; Interleukin-3, 5and GM-CSF signaling; Jak-STAT signaling pathway; Natural killer cellmediated cytotoxicity; Rheumatoid arthritis; Salmonella infection; Signalingby Interleukins; T cell receptor signaling pathway
Function	cytokineactivity; granulocyte macrophage colony-stimulating factor receptor binding;growth factor activity

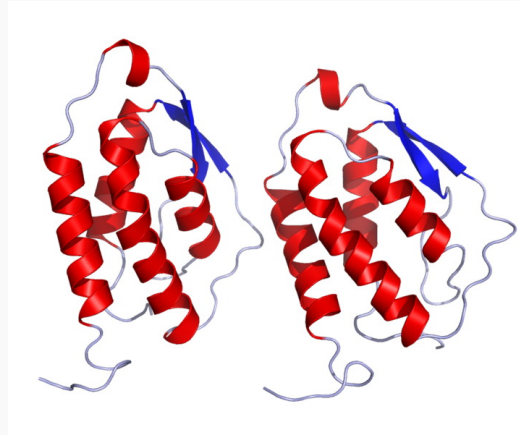
 Tel: 1-631-559-9269 1-516-512-3133

 Email: info@creative-biomart.com  Fax: 1-631-938-8127

 45-1 Ramsey Road, Shirley, NY 11967, USA



PDB rendering based
on 2gmf



Tel: 1-631-559-9269 1-516-512-3133

Email: info@creative-biomart.com Fax: 1-631-938-8127

45-1 Ramsey Road, Shirley, NY 11967, USA