

## Recombinant Active Human CSF2 Protein, His-tagged(N-ter)

Cat. No. CSF2-48H Lot. No. (See product label)

### SPECIFICATION

<b>Product Overview</b>	Recombinant Active Human CSF2 Protein with His tag (N-ter) was expressed in E. coli.
<b>Species</b>	Human
<b>Source</b>	E.coli
<b>Description</b>	The protein encoded by this gene is a cytokine that controls the production, differentiation, and function of granulocytes and macrophages. The active form of the protein is found extracellularly as a homodimer. This gene has been localized to a cluster of related genes at chromosome region 5q31, which is known to be associated with interstitial deletions in the 5q- syndrome and acute myelogenous leukemia. Other genes in the cluster include those encoding interleukins 4, 5, and 13. [provided by RefSeq, Jul 2008]
<b>Form</b>	Powder
<b>Bio-activity</b>	Determined by its ability to induce TF-1 cells proliferation. The ED50 for this effect is < 0.5 ng/mL.
<b>AA Sequence</b>	APARSPSPSTQPWEHVNAIQEARRLLNLSRDAAEMNETVEVISEMFDLQEPTCLQT RLELYKQGLRGSLTKLKGPLTMMASHYKQHCPPTPETSCATQIITFESFKENLKDPLL VIPFDCWEPVQE
<b>Endotoxin</b>	Endotoxin level is less than 0.1 EU/μg of the protein, as determined by the LAL test.

 Tel: 1-631-559-9269 1-516-512-3133

 Email: [info@creative-biomart.com](mailto:info@creative-biomart.com)  Fax: 1-631-938-8127

 45-1 Ramsey Road, Shirley, NY 11967, USA

<b>Purity</b>	> 98% (by SDS-PAGE)
<b>Applications</b>	SDS-PAGE
<b>Notes</b>	For laboratory research only, not for drug, diagnostic or other use.
<b>Storage</b>	Lyophilized protein should be stored at -20°C. After reconstitution, aliquot and store at -20°C or -80°C for up to one month. Storage in frost free freezers is not recommended. Avoid repeated freeze/thaw cycles. Suggest spin the vial prior to opening.
<b>Storage Buffer</b>	PBS (pH 8.0)
<b>Reconstitution</b>	It is recommended to reconstitute the lyophilized protein in sterile water to a concentration not less than 100 µg/mL and incubate the stock solution for at least 20 min at room temperature to make sure the protein is dissolved completely.

## GENE INFORMATION

<b>Gene Name</b>	CSF2 colony stimulating factor 2 (granulocyte-macrophage) [ Homo sapiens ]
<b>Official Symbol</b>	CSF2
<b>Synonyms</b>	CSF2; colony stimulating factor 2 (granulocyte-macrophage); granulocyte-macrophage colony-stimulating factor; GM CSF; GMCSF; granulocyte macrophage colony stimulating factor; molgramostin; sargramostim; CSF; colony-stimulating factor; granulocyte-macrophage colony stimulating factor; MGC131935; MGC138897;
<b>Gene ID</b>	1437
<b>mRNA Refseq</b>	NM_000758

 Tel: 1-631-559-9269 1-516-512-3133

 Email: [info@creative-biomart.com](mailto:info@creative-biomart.com)  Fax: 1-631-938-8127

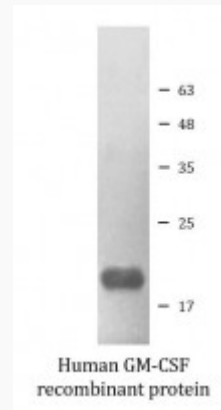
 45-1 Ramsey Road, Shirley, NY 11967, USA

**Protein Refseq** NP\_000749

**MIM** 138960

**UniProt ID** P04141

**SDS-PAGE**



 Tel: 1-631-559-9269 1-516-512-3133

 Email: [info@creative-biomart.com](mailto:info@creative-biomart.com)  Fax: 1-631-938-8127

 45-1 Ramsey Road, Shirley, NY 11967, USA