

Recombinant Human GMCSF, His-tagged

Cat. No. CSF2-85H **Lot. No.** (See product label)

SPECIFICATION

Product Overview	Recombinant Human GMCSF produced in <i>E. Coli</i> is a single, non-glycosylated, polypeptide chain containing 127 amino acids fragment (18-144) and having a molecular mass of 18.98 KDa Dalton with an amino-terminal hexahistidine tag. Recombinant Human GM-CSF His is purified by proprietary chromatographic techniques.
Species	Human
Source	E.coli
ProteinLength	18-144 a.a.
Description	GMCSF is a cytokine that controls the production, differentiation, and function of granulocytes and macrophages. The active form of the protein is found extracellularly as a homodimer. This gene has been localized to a cluster of related genes at chromosome region 5q31, which is known to be associated with interstitial deletions in the 5q- syndrome and acute myelogenous leukemia. Other genes in the cluster include those encoding interleukins 4, 5, and 13. GM-CSF stimulates the growth and differentiation of hematopoietic precursor cells from various lineages, including granulocytes, macrophages, eosinophils and erythrocytes.
Physical Appearance	Sterile Filtered clear solution.
Purity	Greater than 95.0% as determined by: (a) Analysis by RP-HPLC. (b) Analysis by SDS-PAGE.

 Tel: 1-631-559-9269 1-516-512-3133

 Email: info@creative-biomart.com  Fax: 1-631-938-8127

 45-1 Ramsey Road, Shirley, NY 11967, USA

Formulation	Granulocyte Macrophage Colony Stimulating Factor-His supplied in 20mM Tris HCl (pH 8) and 50% glycerol.
Solubility	It is recommended to reconstitute the lyophilized Granulocyte Macrophage Colony Stimulating Factor in sterile 18 MΩ-cm H ₂ O not less than 100 g/ml, which can then be further diluted to other aqueous solutions.
Stability	Store at 4°C if entire vial will be used within 2-4 weeks. Store, frozen at -20°C for longer periods of time. Please avoid freeze thaw cycles.

GENE INFORMATION

Synonyms	CSF; GM-CSF; GMCSF; MGC131935; MGC138897; CSF2; CSF-2; MGI-1GM; Pluripoietin-alpha; Molgramostin; Sargramostim; molgramostin; sargramostim; colony stimulating factor 2; Colony-stimulating factor; granulocyte-macrophage colony stimulating factor; colony stimulating factor 2 (granulocyte-macrophage)
Gene Name	CSF2 colony stimulating factor 2 (granulocyte-macrophage) [Homo sapiens]
Gene ID	1437
mRNA Refseq	NM_000758
Protein Refseq	NP_000749
MIM	138960
UniProt ID	P04141
Chromosome Location	5q31.1

 Tel: 1-631-559-9269 1-516-512-3133

 Email: info@creative-biomart.com  Fax: 1-631-938-8127

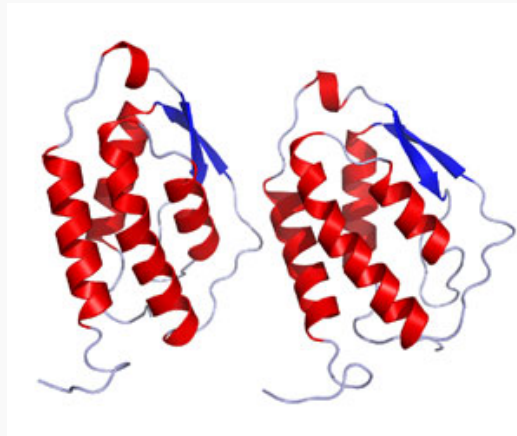
 45-1 Ramsey Road, Shirley, NY 11967, USA


Pathway

Cytokine-cytokine receptor interaction; Fc epsilon RI signaling pathway; Hematopoietic cell lineage; Jak-STAT signaling pathway; Natural killer cell mediated cytotoxicity; T cell receptor signaling pathway


Function

cytokine activity; granulocyte macrophage colony-stimulating factor receptor binding; growth factor activity; protein binding

PDB rendering based on 2gmf

 Tel: 1-631-559-9269 1-516-512-3133

 Email: info@creative-biomart.com  Fax: 1-631-938-8127

 45-1 Ramsey Road, Shirley, NY 11967, USA