

## Recombinant Human CSF2RA Protein, C-His-tagged

Cat. No. CSF2RA-021H Lot. No. (See product label)

### SPECIFICATION

<b>Product Overview</b>	Recombinant Human CSF2RA Protein with C-His tag was expressed in E. coli.
<b>Species</b>	Human
<b>Source</b>	E.coli
<b>Description</b>	<p>Granulocyte-macrophage colony-stimulating factor receptor subunit alpha (GM-CSF Receptor <math>\alpha</math>), also known as CSF2RA and CD116, is a type 1 transmembrane protein with low affinity for GM-CSF. GM-CSF Receptor <math>\alpha</math> is primarily expressed on myeloid cells, including granulocytes, monocytes, macrophages, and dendritic cells. GM-CSF Receptor <math>\alpha</math> forms a heterodimeric receptor complex with GM-CSF Receptor <math>\beta</math>, creating the high affinity GM-CSF receptor. Upon dimerization and ligand binding, the <math>\beta</math> subunit becomes phosphorylated and transduces signals via Jak/STAT and MAPK pathways for cell proliferation, differentiation, and survival. Oligomerization of the high affinity GM-CSF Receptor <math>\alpha/\beta</math> complex is required for optimal intracellular signal transduction. Soluble GM-CSF Receptor <math>\alpha</math>, either secreted or cleaved from the cell surface, can competitively bind GM-CSF, preventing membrane receptor signaling. Multiple isoforms of GM-CSF Receptor <math>\alpha</math> have been described.</p>
<b>Molecular Mass</b>	~33 kDa
<b>AA Sequence</b>	<p>EKSDLRTVAPASSLNVRFDSTMNLSWDCQENTTFSKCFLTDKKNRVVEPRLSNNE            CSCTFREICLHEGVTFEVHVNTSQRGFQKLLYPNSGREGTAAQNFSCFIYNADLM            NCTWARGPTAPRDVQYFLYIRNSKRRREIRCPYYIQDSGTHVGCHLDNLSGLTSRN</p>

 Tel: 1-631-559-9269 1-516-512-3133

 Email: [info@creative-biomart.com](mailto:info@creative-biomart.com)  Fax: 1-631-938-8127

 45-1 Ramsey Road, Shirley, NY 11967, USA

YFLVNGTSREIGIQFFDSLDTKKIERFNPPSNVTVRCNTHCLVRWKQPRTYQKLSY  
LDFQYQLDVHRKNTQPGTENLLINVSGDLENRYNFPSSEPRAKHSVKIRAADVRLN  
WSSWSEAIEFGSDDG

**Purity**

Transferred into competent cells and the supernatant was purified by NI column affinity chromatography and the purity is > 85% (by SDS-PAGE).

**Notes**

For research use only, not for use in diagnostic procedure.

**Storage**

Store at 4 centigrade short term. Aliquot and store at -20 centigrade long term. Avoid freeze-thaw cycles.

**Concentration**

≥0.5 mg/mL

**Storage Buffer**

PBS, 4M Urea, pH7.4

## GENE INFORMATION

**Gene Name**

CSF2RA colony stimulating factor 2 receptor, alpha, low-affinity (granulocyte-macrophage) [ Homo sapiens (human) ]

**Official Symbol**

CSF2RA

**Synonyms**

CSF2RA; colony stimulating factor 2 receptor, alpha, low-affinity (granulocyte-macrophage); CSF2R; granulocyte-macrophage colony-stimulating factor receptor subunit alpha; CD116; GMR-alpha; GMCSFR-alpha; CD116 antigen; GM-CSF receptor alpha subunit; colony stimulating factor 2 receptor alpha subunit; granulocyte-macrophage colony-stimulating factor receptor alpha chain; GMR; SMDP4; CDw116; CSF2RX; CSF2RY; GMCSFR; CSF2RAX; CSF2RAY; MGC3848; MGC4838; GM-CSF-R-alpha;

 Tel: 1-631-559-9269 1-516-512-3133

 Email: [info@creative-biomart.com](mailto:info@creative-biomart.com)  Fax: 1-631-938-8127

 45-1 Ramsey Road, Shirley, NY 11967, USA

**Gene ID** 1438

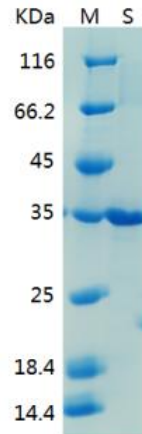
**mRNA Refseq** NM\_001161529

**Protein Refseq** NP\_001155001

**MIM** 306250

**UniProt ID** P15509

**SDS-PAGE**



**SDS-PAGE Result**

 Tel: 1-631-559-9269 1-516-512-3133

 Email: [info@creative-biomart.com](mailto:info@creative-biomart.com)  Fax: 1-631-938-8127

 45-1 Ramsey Road, Shirley, NY 11967, USA