

Recombinant Human CSF2RA Protein, Myc/DDK-tagged, C13 and N15-labeled

Cat. No. CSF2RA-3450H **Lot. No.** (See product label)

SPECIFICATION

Product Overview	CSF2RA MS Standard C13 and N15-labeled recombinant protein (NP_758448) with a C-terminal MYC/DDK tag, was expressed in HEK293 cells.
Species	Human
Source	HEK293
Description	The protein encoded by this gene is the alpha subunit of the heterodimeric receptor for colony stimulating factor 2, a cytokine which controls the production, differentiation, and function of granulocytes and macrophages. The encoded protein is a member of the cytokine family of receptors. This gene is found in the pseudoautosomal region (PAR) of the X and Y chromosomes. Multiple transcript variants encoding different isoforms have been found for this gene, with some of the isoforms being membrane-bound and others being soluble.
Molecular Mass	46.2 kDa
AA Sequence	MLLLVTSLLLCELPHPAFLLIPEKSDLRTVAPASSLNVRFDSRTMNL SWDCQENTTFS KCFLTDKKNRVVEPRLSNNECSCTFREICLHEGVTFEVHVNTSQRGFQQKLLYPNS GREGTAAQNFSCFIYNADLMNCTWARGPTAPRDVQYFLYIRNSKRREIRCPYYIQD SGTHVGCHLDNLSGLTSRNYFLVNGTSREIGIQFFDSLLDTKKIERFNPPSNVTVRCN TTHCLVRWKQPRTYQKLSYLDYQYQLDVHRKNTQPGTENLLINVSGDLENRYNFPS SEPRAKHSV KIRAADV RILNWSSWSEAIEFGSDDGNLGSVYIYVLLIVGTLVCGIVLGF

 Tel: 1-631-559-9269 1-516-512-3133

 Email: info@creative-biomart.com  Fax: 1-631-938-8127

 45-1 Ramsey Road, Shirley, NY 11967, USA

LFKRFLRIQRLFPPVPQIKDKLNDNHEVEDEIIWEEFTPEEGKGYREEVLTVKEITTRT
RPLEQKLISEEDLAANDILDYKDDDDKV

Purity > 80% as determined by SDS-PAGE and Coomassie blue staining

Stability Stable for 3 months from receipt of products under proper storage and handling conditions.

Storage Store at -80 centigrade. Avoid repeated freeze-thaw cycles.

Concentration 50 µg/mL as determined by BCA

Storage Buffer 100 mM glycine, 25 mM Tris-HCl, pH 7.3.

GENE INFORMATION

Gene Name CSF2RA colony stimulating factor 2 receptor subunit alpha [Homo sapiens (human)]

Official Symbol CSF2RA

Synonyms CSF2RA; colony stimulating factor 2 receptor, alpha, low-affinity (granulocyte-macrophage); CSF2R; granulocyte-macrophage colony-stimulating factor receptor subunit alpha; CD116; GMR-alpha; GMCSFR-alpha; CD116 antigen; GM-CSF receptor alpha subunit; colony stimulating factor 2 receptor alpha subunit; granulocyte-macrophage colony-stimulating factor receptor alpha chain; GMR; SMDP4; CDw116; CSF2RX; CSF2RY; GMCSFR; CSF2RAX; CSF2RAY; MGC3848; MGC4838; GM-CSF-R-alpha;

Gene ID 1438

mRNA Refseq NM_172245

 Tel: 1-631-559-9269 1-516-512-3133

 Email: info@creative-biomart.com  Fax: 1-631-938-8127

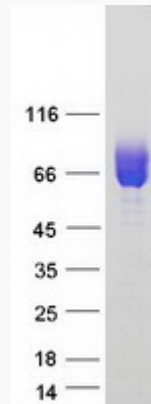
 45-1 Ramsey Road, Shirley, NY 11967, USA

Protein Refseq [NP_758448](#)

MIM [306250](#)

UniProt ID [P15509](#)

SDS-PAGE



 Tel: 1-631-559-9269 1-516-512-3133

 Email: info@creative-biomart.com  Fax: 1-631-938-8127

 45-1 Ramsey Road, Shirley, NY 11967, USA