

Active Recombinant Human CSF2RA Homodimer Protein, His&Avi tagged

Cat. No. CSF2RA-34H **Lot. No.** (See product label)

SPECIFICATION

Product Overview	CSF2RA dimer protein contains a CSF2RA extracellular domain (UniProt# P15509) fused with a proprietary cis-dimer motif followed by a tandem His-Avi tag at the C-terminus was expressed in HEK293T.
Species	Human
Source	HEK293T
ProteinLength	23-320 aa
Description	Human colony stimulating factor 2 receptor subunit alpha (CSF2RA) is a Type I transmembrane glycoprotein. CSF2RA is also known as granulocyte-macrophage colony-stimulating factor receptor alpha (GMCSFR-alpha), GMR α subunit, and cluster of differentiation 116 (CD116). The CSF2RA extracellular domain contains two fibronectin type III (FN III) domains with a highly conserved WSXWS motif that is present near the C-terminus of the second domain. CSF2RA is expressed on (cell types). CSF2RA is primarily located on neutrophils, eosinophils and monocytes/macrophages and is a receptor for granulocyte-macrophage colony-stimulating factor (GM-CSF). CSF2RA can form a heterodimer with CSF2RB and these heterodimers can form several multimers including a dodecamer. It has been found that CSF2RA specifically has tumor suppression characteristics that have made stimulating CSF2RA expression an emerging strategy in cancer therapy.

 Tel: 1-631-559-9269 1-516-512-3133

 Email: info@creative-biomart.com  Fax: 1-631-938-8127

 45-1 Ramsey Road, Shirley, NY 11967, USA

Molecular Mass	89 kDa
Purity	Greater than 90% dimer form as determined by SDS-PAGE under non-reducing condition
Application	Verified Applications: ELISA for CSF2RA-specific antibody and ELISA and SPR for granulocyte-macrophage colony-stimulating factor (GM-CSF) ligand protein binding assays. Suggested Applications: SPR & BLI for CSF2RA-specific antibody and BLI for GM-CSF protein binding assays. Animal immunization, RUO.
Storage	Store at -80 centigrade.
Storage Buffer	0.22µm filtered PBS, pH 7.4
Shipping	Frozen Dry Ice

GENE INFORMATION

Gene Name	CSF2RA colony stimulating factor 2 receptor, alpha, low-affinity (granulocyte-macrophage) [<i>Homo sapiens</i> (human)]
Official Symbol	CSF2RA
Synonyms	CSF2RA; colony stimulating factor 2 receptor, alpha, low-affinity (granulocyte-macrophage); CSF2R; granulocyte-macrophage colony-stimulating factor receptor subunit alpha; CD116; GMR-alpha; GMCSFR-alpha; CD116 antigen; GM-CSF receptor alpha subunit; colony stimulating factor 2 receptor alpha subunit; granulocyte-macrophage colony-stimulating factor receptor alpha chain; GMR; SMDP4; CDw116; CSF2RX; CSF2RY; GMCSFR; CSF2RAX; CSF2RAY; MGC3848; MGC4838; GM-CSF-R-alpha;

 Tel: 1-631-559-9269 1-516-512-3133

 Email: info@creative-biomart.com  Fax: 1-631-938-8127

 45-1 Ramsey Road, Shirley, NY 11967, USA

Gene ID 1438

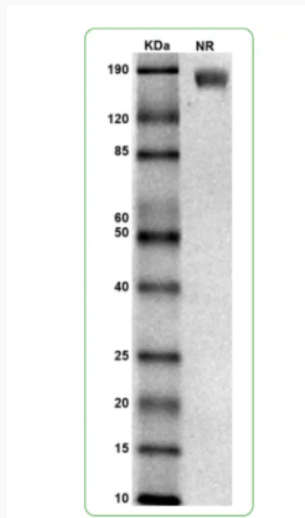
mRNA Refseq NM_001161529

Protein Refseq NP_001155001

MIM 306250

UniProt ID P15509

SDS-PAGE and WB



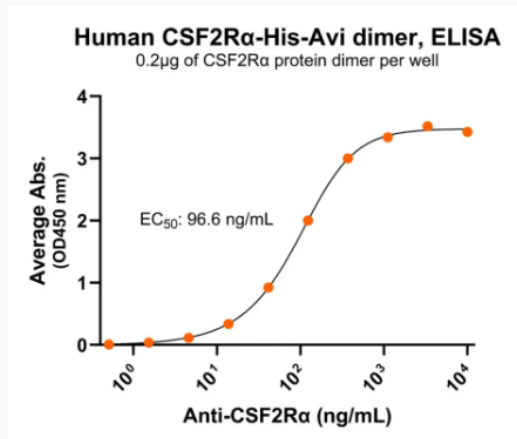
MW: Molecular Weight marker reduced condition NR: CSF2Rα under non-reduced condition

 Tel: 1-631-559-9269 1-516-512-3133

 Email: info@creative-biomart.com  Fax: 1-631-938-8127

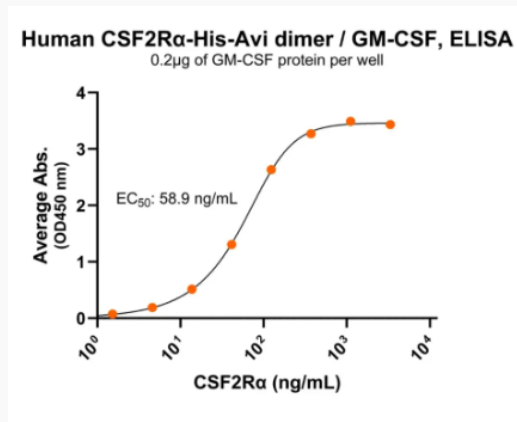
 45-1 Ramsey Road, Shirley, NY 11967, USA

Bioactivity-Antibody Binding



Immobilized human CSF2Rα protein dimer, His Tag at 2 µg/mL (100 µL/well) can bind anti-human CSF2Rα polyclonal antibody with half maximal effective concentration (EC₅₀) range of 48.3-193.1 ng/mL (QC tested).

Bioactivity-Ligand Binding



Immobilized human GM-CSF at 2 µg/mL (100 µL/well) can bind anti-human CSF2Rα protein dimer, His Tag with half maximal effective concentration (EC₅₀) range of 29.5-117.8 ng/mL (QC tested).

Tel: 1-631-559-9269 1-516-512-3133

Email: info@creative-biomart.com Fax: 1-631-938-8127

45-1 Ramsey Road, Shirley, NY 11967, USA