

Recombinant Human CSF2RA protein, His-Avi-tagged

Cat. No. CSF2RA-509H **Lot. No.** (See product label)

SPECIFICATION

Product Overview	Recombinant Human CSF2R Protein is expressed from mammalian with His Tag and Avi Tag at the C-terminal. It contains Glu 23-Gly 320.
Species	Human
Source	HEK293
ProteinLength	Glu 23-Gly 320
Description	CSF2R, also known as CD116, is a component of the receptor complex that mediates cellular responses to GM-CSF. GM-CSF promotes the differentiation and mobilization of granulocytemacrophage, erythroid, megakaryocyte, and eosinophil progenitors. CSF2R is a low affinity receptor for granulocyte-macrophage colony-stimulating factor. Transduces a signal that results in the proliferation, differentiation, and functional activation of hematopoietic cells.
Form	Supplied as 0.22um filtered solution in 20mM PBS,pH7.4..
Molecular Mass	The protein has a predicted MW of 37.7 KDa. Due to glycosylation, the protein migrates to 68- 75KDa based on Bis-Tris PAGE result.
Endotoxin	Less than 0.05 EU per ug by the LAL method.
Purity	> 95% as determined by Tris-Bis PAGE; > 95% as determined by HPLC

 Tel: 1-631-559-9269 1-516-512-3133

 Email: info@creative-biomart.com  Fax: 1-631-938-8127

 45-1 Ramsey Road, Shirley, NY 11967, USA

Storage The product should be stored at -70°C. Please do not repeated freeze-thaw cycles.

GENE INFORMATION

Gene Name CSF2RA

Official Symbol CSF2RA

Synonyms

CD116 antigen; CD116; CDw116; colony stimulating factor 2 receptor alpha subunit; colony stimulating factor 2 receptor, alpha, low-affinity(granulocyte-macrophage); CSF2R; CSF2RA; CSF2RAX; CSF2RAY; CSF2RX; CSF2RY; GM-CSF R alpha; GM-CSF receptor alpha subunit; GMCSFR alpha; GMCSFR; GM-CSFRa; GM-CSF-R-alpha; GMCSFR-alpha; GMR; GMR-alpha; granulocyte-macrophage colony-stimulating factor receptor alpha chain; granulocyte-macrophage colony-stimulating factor receptor subunit alpha; MGC3848; MGC4838

Gene ID 1438

mRNA Refseq NM_001161529.1

Protein Refseq NP_001155001.1

MIM 306250

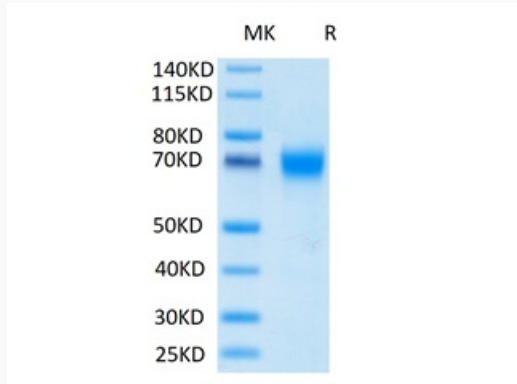
UniProt ID P15509

 Tel: 1-631-559-9269 1-516-512-3133

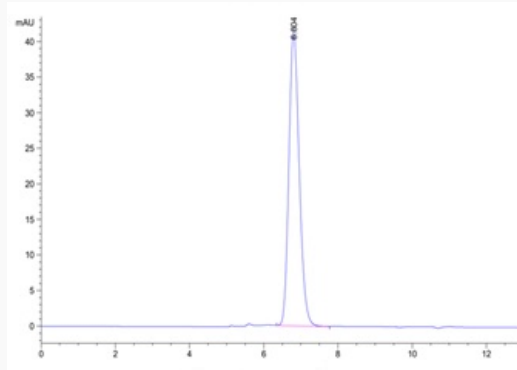
 Email: info@creative-biomart.com  Fax: 1-631-938-8127

 45-1 Ramsey Road, Shirley, NY 11967, USA

**Tris-Bis PAGE of
CSF2RA-509H**



**SEC-HPLC of
CSF2RA-509H**



 Tel: 1-631-559-9269 1-516-512-3133

 Email: info@creative-biomart.com  Fax: 1-631-938-8127

 45-1 Ramsey Road, Shirley, NY 11967, USA