

Recombinant Human CSF2RA protein, His-Avi-tagged, Biotinylated

Cat. No. CSF2RA-509HB Lot. No. (See product label)

SPECIFICATION

Product Overview	Biotinylated Recombinant Human CSF2RA protein(P15509-1)(Glu23-Gly320), fused with C-terminal His and Avi tag, was expressed in HEK293.
Species	Human
Source	HEK293
ProteinLength	Glu23-Gly320
Tag	C-His-Avi
Conjugation/Label	Biotin
Form	Lyophilized from 0.22µm filtered solution in PBS (pH 7.4). Normally 5% trehalose is added as protectant before lyophilization.
Bio-activity	Immobilized Anti-GM-CSF R alpha Antibody, hFc Tag at 1ug/ml (100ul/well) on the plate. Dose response curve for Biotinylated Human GM-CSF R alpha, His Tag with the EC50 of 11.6ng/ml determined by ELISA.
Molecular Mass	The protein has a predicted MW of 37.7 kDa. Due to glycosylation, the protein migrates to 68-75 kDa based on Tris-Bis PAGE result.
Endotoxin	Less than 1EU per µg by the LAL method.

 Tel: 1-631-559-9269 1-516-512-3133

 Email: info@creative-biomart.com  Fax: 1-631-938-8127

 45-1 Ramsey Road, Shirley, NY 11967, USA

Purity	> 95% as determined by Tris-Bis PAGE;> 95% as determined by HPLC
Storage	Reconstituted protein stable at -80°C for 12 months, 4°C for 1 week. Use a manual defrost freezer and avoid repeated freeze-thaw cycles.
Reconstitution	Centrifuge tubes before opening. Reconstituting to a concentration more than 100 µg/ml is recommended. Dissolve the lyophilized protein in distilled water.
Conjugation	Biotin

GENE INFORMATION

Gene Name	CSF2RA colony stimulating factor 2 receptor, alpha, low-affinity (granulocyte-macrophage) [Homo sapiens]
Official Symbol	CSF2RA
Synonyms	CSF2RA; colony stimulating factor 2 receptor, alpha, low-affinity (granulocyte-macrophage); CSF2R; granulocyte-macrophage colony-stimulating factor receptor subunit alpha; CD116; GMR-alpha; GMCSFR-alpha; CD116 antigen; GM-CSF receptor alpha subunit; colony stimulating factor 2 receptor alpha subunit; granulocyte-macrophage colony-stimulating factor receptor alpha chain; GMR; SMDP4; CDw116; CSF2RX; CSF2RY; GMCSFR; CSF2RAX; CSF2RAY; MGC3848; MGC4838; GM-CSF-R-alpha;
Gene ID	1438
mRNA Refseq	NM_001161529
Protein Refseq	NP_001155001

 Tel: 1-631-559-9269 1-516-512-3133

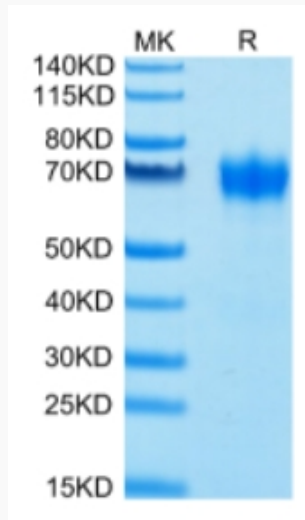
 Email: info@creative-biomart.com  Fax: 1-631-938-8127

 45-1 Ramsey Road, Shirley, NY 11967, USA

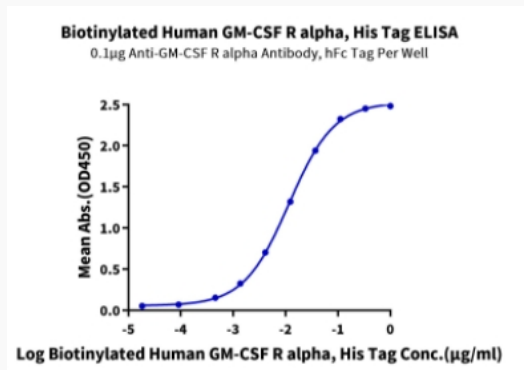
MIM 306250

UniProt ID P15509

Tris-Bis PAGE



ELISA Data



Tel: 1-631-559-9269 1-516-512-3133

Email: info@creative-biomart.com Fax: 1-631-938-8127

45-1 Ramsey Road, Shirley, NY 11967, USA