

Recombinant Human CSF2RA protein, His & GST-tagged

Cat. No. CSF2RA-7035H **Lot. No.** (See product label)

SPECIFICATION

Product Overview	Recombinant Human CSF2RA aa. (Arg28~Pro112 (Accession # P15509)) fused with N-terminal His & GST tag was produced in E. coli cells.
Species	Human
Source	E.coli
ProteinLength	Arg28~Pro112
Description	The protein encoded by this gene is the alpha subunit of the heterodimeric receptor for colony stimulating factor 2, a cytokine which controls the production, differentiation, and function of granulocytes and macrophages. The encoded protein is a member of the cytokine family of receptors. This gene is found in the pseudoautosomal region (PAR) of the X and Y chromosomes. Multiple transcript variants encoding different isoforms have been found for this gene, with some of the isoforms being membrane-bound and others being soluble.
Form	Freeze-dried powder
Molecular Mass	Predicted Molecular Mass: 42.3kDa
Endotoxin	<1.0EU per 1ug (determined by the LAL method)
Purity	>95%

 Tel: 1-631-559-9269 1-516-512-3133

 Email: info@creative-biomart.com  Fax: 1-631-938-8127

 45-1 Ramsey Road, Shirley, NY 11967, USA

Characteristic	The isoelectric point is 6.7.
Applications	SDS-PAGE; WB; ELISA; IP
Stability	The thermal stability is described by the loss rate. The loss rate was determined by accelerated thermal degradation test, that is, incubate the protein at 37°C for 48h, and no obvious degradation and precipitation were observed. The loss rate is less than 5% within the expiration date under appropriate storage condition.
Storage	Avoid repeated freeze/thaw cycles. Store at 2-8°C for one month. Aliquot and store at -80°C for 12 months.
Storage buffer	Supplied as lyophilized form in PBS, pH7.4, containing 5% trehalose, 0.01% sarcosyl.
Reconstitution	Reconstitute in sterile PBS, pH7.2-pH7.4.

GENE INFORMATION

Gene Name	CSF2RA colony stimulating factor 2 receptor alpha subunit [Homo sapiens (human)]
Official Symbol	CSF2RA
Synonyms	CSF2RA; colony stimulating factor 2 receptor alpha subunit; GMR; CD116; CSF2R; SMDP4; CDw116; CSF2RX; CSF2RY; GMCSFR; CSF2RAX; CSF2RAY; GM-CSF-R-alpha; granulocyte-macrophage colony-stimulating factor receptor subunit alpha; CD116 antigen; GM-CSF receptor alpha subunit; GMCSFR-alpha; GMR-alpha; colony stimulating factor 2 receptor, alpha, low-affinity (granulocyte-macrophage); granulocyte-macrophage colony-stimulating factor receptor alpha chain
Gene ID	1438

 Tel: 1-631-559-9269 1-516-512-3133

 Email: info@creative-biomart.com  Fax: 1-631-938-8127

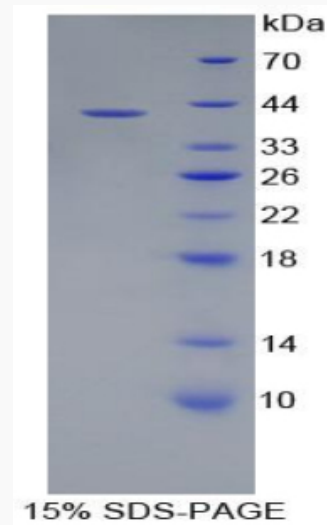
 45-1 Ramsey Road, Shirley, NY 11967, USA

mRNA Refseq [NM_001161529.1](#)

Protein Refseq [NP_001155001.1](#)

UniProt ID [P15509](#)

SDS-PAGE



 Tel: 1-631-559-9269 1-516-512-3133

 Email: info@creative-biomart.com  Fax: 1-631-938-8127

 45-1 Ramsey Road, Shirley, NY 11967, USA