

## Recombinant Human CSF2RA protein, His-tagged

Cat. No. CSF2RA-725H Lot. No. (See product label)

### SPECIFICATION

<b>Product Overview</b>	Recombinant Human CSF2RA protein(P15509-1)(Glu23-Gly320), fused with C-terminal His tag, was expressed in HEK293.
<b>Species</b>	Human
<b>Source</b>	HEK293
<b>ProteinLength</b>	Glu23-Gly320
<b>Tag</b>	C-His
<b>Form</b>	Supplied as 0.22µm filtered solution in PBS (pH 7.4).
<b>Bio-activity</b>	Immobilized Human GM-CSF R alpha, His Tag at 1ug/ml (100ul/Well) on the plate. Dose response curve for Anti-GM-CSF R alpha Antibody, hFc Tag with the EC50 of 6.6ng/ml determined by ELISA (QC Test).
<b>Molecular Mass</b>	The protein has a predicted MW of 35.3 kDa. Due to glycosylation, the protein migrates to 60-70 kDa based on Tris-Bis PAGE result.
<b>Endotoxin</b>	Less than 1EU per µg by the LAL method.
<b>Purity</b>	> 95% as determined by Tris-Bis PAGE;> 95% as determined by HPLC
<b>Storage</b>	Valid for 12 months from date of receipt when stored at -80°C. Recommend to aliquot

 Tel: 1-631-559-9269 1-516-512-3133

 Email: [info@creative-biomart.com](mailto:info@creative-biomart.com)  Fax: 1-631-938-8127

 45-1 Ramsey Road, Shirley, NY 11967, USA

the protein into smaller quantities for optimal storage. Please do not repeated freeze-thaw cycles.

**Reconstitution**

It is recommended that sterile water be added to the vial to prepare a stock solution of 0.2 ug/ul. Centrifuge the vial at 4°C before opening to recover the entire contents.

## GENE INFORMATION

**Gene Name**

CSF2RA colony stimulating factor 2 receptor, alpha, low-affinity (granulocyte-macrophage) [ Homo sapiens ]

**Official Symbol**

CSF2RA

**Synonyms**

CSF2RA; colony stimulating factor 2 receptor, alpha, low-affinity (granulocyte-macrophage); CSF2R; granulocyte-macrophage colony-stimulating factor receptor subunit alpha; CD116; GMR-alpha; GMCSFR-alpha; CD116 antigen; GM-CSF receptor alpha subunit; colony stimulating factor 2 receptor alpha subunit; granulocyte-macrophage colony-stimulating factor receptor alpha chain; GMR; SMDP4; CDw116; CSF2RX; CSF2RY; GMCSFR; CSF2RAX; CSF2RAY; MGC3848; MGC4838; GM-CSF-R-alpha;

**Gene ID**

1438

**mRNA Refseq**

NM\_001161529

**Protein Refseq**

NP\_001155001

**MIM**

306250

**UniProt ID**

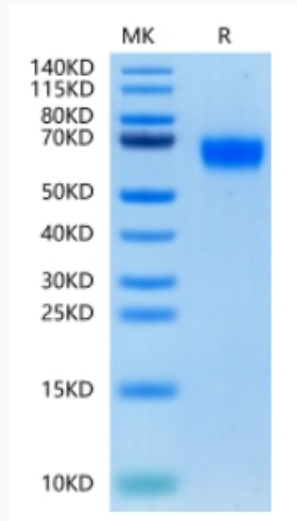
P15509

 Tel: 1-631-559-9269 1-516-512-3133

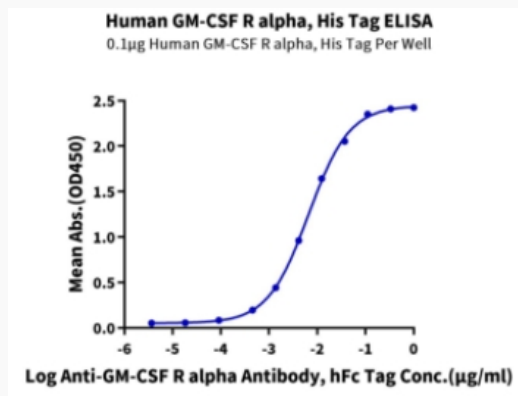
 Email: [info@creative-biomart.com](mailto:info@creative-biomart.com)  Fax: 1-631-938-8127

 45-1 Ramsey Road, Shirley, NY 11967, USA

**Tris-Bis PAGE**



**ELISA Data**



 Tel: 1-631-559-9269 1-516-512-3133

 Email: [info@creative-biomart.com](mailto:info@creative-biomart.com)  Fax: 1-631-938-8127

 45-1 Ramsey Road, Shirley, NY 11967, USA