

Recombinant Human CSF2RB Protein, C-His-tagged

Cat. No. CSF2RB-022H Lot. No. (See product label)

SPECIFICATION

Product Overview Recombinant Human CSF2RB Protein with C-His tag was expressed in E. coli.

Species Human

Source E.coli

Description The common beta-chain (beta-c) of the granulocyte macrophage colony-stimulating factor (GM-CSF), interleukin-3 (IL-3) and IL-5 receptors is the major signaling subunit of these receptors, coupling ligand binding to multiple biological activities. Tyrosine phosphorylation of cytokine receptor common beta-chain is one of the first events in GM-CSF, IL-3 and IL-5 receptor activation and in signaling initiation. Serine phosphorylation within the 14-3-3 binding sequence of the common beta-chain is also involved in GM-CSF, IL-3 and IL-5 receptor-specific functions.

Molecular Mass ~47 kDa

AA Sequence

```

WERSLAGAEEIPLQTLRCYNDYTSHITCRWADTQDAQRLVNVTLIRRVNEDLLEPV
SCDLSDMPWSACPHPRCVPRRCVIPCQSFVVTVDVDFSFQPDRPLGTRTLVTLTQ
HVQPPEPRDLQISTDQDHFLTWSVALGSPQSHWLSPGDLEFEVVYKRLQDSWED
AAILLSNTSQATLGPEHLMPSSTYVARVTRLAPGSRLSGRPSKWSPEVCWDSQPG
DEAQPQNLECFDFDGAAVLSCSWEVRKEVASSVSFGLFYKPSPDAGEEEECSPVLR
GLGSLHTRHHCQIPVPDPATHGQYIVSVQPRRAEKHIKSSVNIQMAPPVSLNVTKDGD
SYSLRWETMKMRYEHIDHTFEIQYRKDTATWKDSKTETLQNAHSMALPALEPSTRY
WARVRVRTSRTGYNGIWSEWSEARSWDTESVLPMW
    
```

 Tel: 1-631-559-9269 1-516-512-3133

 Email: info@creative-biomart.com  Fax: 1-631-938-8127

 45-1 Ramsey Road, Shirley, NY 11967, USA

Purity	Transferred into competent cells and the supernatant was purified by NI column affinity chromatography and the purity is > 85% (by SDS-PAGE).
Notes	For research use only, not for use in diagnostic procedure.
Storage	Store at 4 centigrade short term. Aliquot and store at -20 centigrade long term. Avoid freeze-thaw cycles.
Concentration	≥0.5 mg/mL
Storage Buffer	PBS, 4M Urea, pH7.4

GENE INFORMATION

Gene Name	CSF2RB colony stimulating factor 2 receptor, beta, low-affinity (granulocyte-macrophage) [Homo sapiens (human)]
Official Symbol	CSF2RB
Synonyms	CSF2RB; colony stimulating factor 2 receptor, beta, low-affinity (granulocyte-macrophage); IL3RB; cytokine receptor common subunit beta; CD131; IL5RB; GM-CSF/IL-3/IL-5 receptor common beta-chain; GM-CSF/IL-3/IL-5 receptor common beta subunit; colony-stimulating factor-2 receptor, beta, low-affinity; interleukin 3 receptor/granulocyte-macrophage colony stimulating factor 3 receptor, beta (high affinity); SMDP5; CDw131;
Gene ID	1439
mRNA Refseq	NM_000395
Protein Refseq	NP_000386

 Tel: 1-631-559-9269 1-516-512-3133

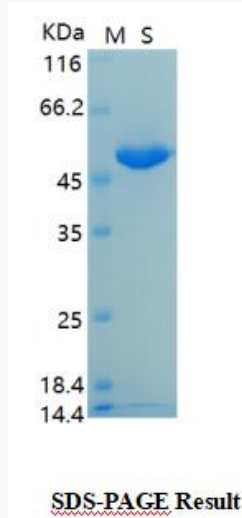
 Email: info@creative-biomart.com  Fax: 1-631-938-8127

 45-1 Ramsey Road, Shirley, NY 11967, USA

MIM 138981

UniProt ID P32927

SDS-PAGE



 Tel: 1-631-559-9269 1-516-512-3133

 Email: info@creative-biomart.com  Fax: 1-631-938-8127

 45-1 Ramsey Road, Shirley, NY 11967, USA