

Recombinant Human CSF3 Protein, GST-tagged

Cat. No. CSF3-1973H **Lot. No.** (See product label)

SPECIFICATION

Product Overview	Human CSF3 full-length ORF (NP_000750.1, 1 a.a. - 207 a.a.) recombinant protein with GST-tag at N-terminal.
Species	Human
Source	Wheat Germ
Description	The protein encoded by this gene is a cytokine that controls the production, differentiation, and function of granulocytes. The active protein is found extracellularly. Alternatively spliced transcript variants have been described for this gene. [provided by RefSeq, May 2010]
Molecular Mass	48.7 kDa
AA Sequence	MAGPATQSPMKLMALQLLLWHSALWTVQEATPLGPASSLPQSFLKCLEQVRKIQQ DGAALQEKLIVSECATYKLCHPEELVLLGHSLGIPWAPLSSCPSQALQLAGCLS QLHS GLFLYQGLLQALEGISPELGPTLDTLQLDVADFATTIWQQMEELGMAPALQPTQGAM PAFASAFQRRAGGVLVASHLQSFLEVS YRVLRHLAQP
Applications	Enzyme-linked Immunoabsorbent Assay Western Blot (Recombinant protein) Antibody Production Protein Array
Notes	Best use within three months from the date of receipt of this protein.

 Tel: 1-631-559-9269 1-516-512-3133

 Email: info@creative-biomart.com  Fax: 1-631-938-8127

 45-1 Ramsey Road, Shirley, NY 11967, USA

Storage Store at -80 centigrade. Aliquot to avoid repeated freezing and thawing.

Storage Buffer 50 mM Tris-HCl, 10 mM reduced Glutathione, pH=8.0 in the elution buffer.

GENE INFORMATION

Gene Name CSF3 colony stimulating factor 3 (granulocyte) [Homo sapiens]

Official Symbol CSF3

Synonyms CSF3; colony stimulating factor 3 (granulocyte); C17orf33, chromosome 17 open reading frame 33 , G CSF, GCSF; granulocyte colony-stimulating factor; filgrastim; granulocyte colony stimulating factor; lenograstim; MGC45931; pluripoietin; GCSF; CSF3OS; C17orf33;

Gene ID 1440

mRNA Refseq NM_000759

Protein Refseq NP_000750

MIM 138970

UniProt ID P09919

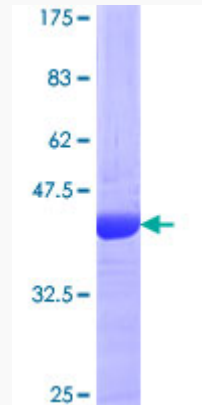
 Tel: 1-631-559-9269 1-516-512-3133

 Email: info@creative-biomart.com  Fax: 1-631-938-8127

 45-1 Ramsey Road, Shirley, NY 11967, USA

Quality Control

Testing:



12.5% SDS-PAGE Stained with Coomassie Blue.

 Tel: 1-631-559-9269 1-516-512-3133

 Email: info@creative-biomart.com  Fax: 1-631-938-8127

 45-1 Ramsey Road, Shirley, NY 11967, USA