

Active Recombinant Human CSF3 protein, hFc-tagged

Cat. No. CSF3-203H Lot. No. (See product label)

SPECIFICATION

Product Overview	Active Recombinant Human CSF3 protein(NP_757373.1) (Ala 30-Pro 204) was expressed in Human Cells, fused with the Fc region of human IgG1 at the N-terminus.
Species	Human
Source	Human Cells
ProteinLength	30-204 aa
Form	Lyophilized from sterile 100mM Glycine, 10mM NaCl, 50mM Tris, pH 7.5.
Bio-activity	Measured in a cell proliferation assay using a murine myeloblastic cell line, NFS-60. The ED50 for this effect is typically 0.2-0.8 ng/ml.
Molecular Mass	The recombinant mature human GCSFb/Fc chimera is a disulfide-linked homodimeric protein. The reduced monomer consists of 412 amino acids and has a calculated molecular mass of 45.4 kDa. As a result of glycosylation, the rh GCSFb/Fc monomer migrates as an approximately 48 kDa protein in SDS-PAGE under reducing conditions.
Endotoxin	< 1.0 EU per µg of the protein as determined by the LAL method.
Purity	> 97 % as determined by SDS-PAGE and SEC-HPLC Analysis.
Storage	Store it under sterile conditions at -20°C to -80°C upon receiving. Recommend to

 Tel: 1-631-559-9269 1-516-512-3133

 Email: info@creative-biomart.com  Fax: 1-631-938-8127

 45-1 Ramsey Road, Shirley, NY 11967, USA

aliquot the protein into smaller quantities for optimal storage. Avoid repeated freeze-thaw cycles.

Reconstitution

It is recommended that sterile water be added to the vial to prepare a stock solution of 0.2 ug/ul. Centrifuge the vial at 4°C before opening to recover the entire contents.

GENE INFORMATION

Gene Name CSF3 colony stimulating factor 3 (granulocyte) [Homo sapiens]

Official Symbol CSF3

Synonyms

CSF3; colony stimulating factor 3 (granulocyte); C17orf33, chromosome 17 open reading frame 33, G CSF, GCSF; granulocyte colony-stimulating factor; filgrastim; granulocyte colony stimulating factor; lenograstim; MGC45931; pluripoietin; GCSF; CSF3OS; C17orf33;

Gene ID 1440

mRNA Refseq NM_000759

Protein Refseq NP_000750

MIM 138970

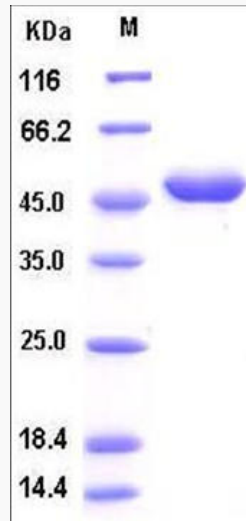
UniProt ID P09919

 Tel: 1-631-559-9269 1-516-512-3133

 Email: info@creative-biomart.com  Fax: 1-631-938-8127

 45-1 Ramsey Road, Shirley, NY 11967, USA

SDS-PAGE



 Tel: 1-631-559-9269 1-516-512-3133

 Email: info@creative-biomart.com  Fax: 1-631-938-8127

 45-1 Ramsey Road, Shirley, NY 11967, USA