

Recombinant Rhesus CSF3 protein

Cat. No. CSF3-387R **Lot. No.** (See product label)

SPECIFICATION

Product Overview	Recombinant Rhesus CSF3 protein was expressed in Escherichia coli.
Species	Rhesus macaque
Source	E.coli
ProteinLength	174
Description	The protein encoded by this gene is a cytokine that controls the production, differentiation, and function of granulocytes. The active protein is found extracellularly. Alternatively spliced transcript variants have been described for this gene.
Form	Lyophilized from a 0.2µm filtered concentrated solution in PBS, pH 7.4.
Bio-activity	Fully biologically active when compared to standard. The ED50 as determined by a cell proliferation assay using murine NFS-60 cells is less than 0.05 ng/ml, corresponding to a specific activity of > 2.0 × 10 ⁷ IU/mg.
Molecular Mass	Approximately 18.9 kDa, a single non-glycosylated polypeptide chain containing 174 amino acids.
AA Sequence	TPLGPASSLPQSFLKCLEQVRKIQGDGAALQEKLKCATYKLCHPEELVLLRHSLGIPW APLSSCPSQALQLTGCLSQLHSSLFLYQGLLQALEGISPELSPTLDTLQLDIADFATTI WQQMEDLGMAPALQPTQGAMPAFTSAFQRRAGGVLVASHLQRFLELAYRVLRHLLA

 Tel: 1-631-559-9269 1-516-512-3133

 Email: info@creative-biomart.com  Fax: 1-631-938-8127

 45-1 Ramsey Road, Shirley, NY 11967, USA

	QS
Endotoxin	Less than 0.1 EU/μg of rRhG-CSF as determined by LAL method.
Purity	>98% by SDS-PAGE and HPLC analysis.
Storage	Use a manual defrost freezer and avoid repeated freeze-thaw cycles. 12 months from date of receipt, -20 to -70 centigrade as supplied. 1 month, 2 to 8 centigrade under sterile conditions after reconstitution. 3 months, -20 to -70 centigrade under sterile conditions after reconstitution.
Reconstitution	We recommend that this vial be briefly centrifuged prior to opening to bring the contents to the bottom. Reconstitute in sterile distilled water or aqueous buffer containing 0.1 % BSA to a concentration of 0.1-1.0 mg/mL. Stock solutions should be apportioned into working aliquots and stored at ≤-20 centigrade. Further dilutions should be made in appropriate buffered solutions.

GENE INFORMATION

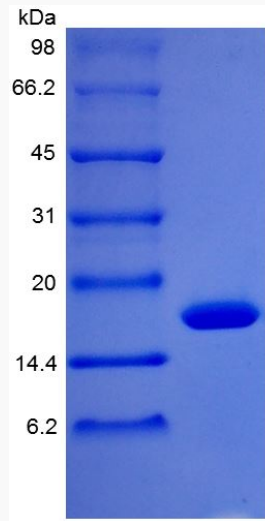
Gene Name	CSF3
Official Symbol	CSF3
Gene ID	698961
mRNA Refseq	XM_001095097.4
Protein Refseq	XP_001095097.2
UniProt ID	F7H1Q6

 Tel: 1-631-559-9269 1-516-512-3133

 Email: info@creative-biomart.com  Fax: 1-631-938-8127

 45-1 Ramsey Road, Shirley, NY 11967, USA

**SDS-PAGE of CSF3-
387R**



 Tel: 1-631-559-9269 1-516-512-3133

 Email: info@creative-biomart.com  Fax: 1-631-938-8127

 45-1 Ramsey Road, Shirley, NY 11967, USA