

Recombinant Human CSF3R Protein, C-His-tagged

Cat. No. CSF3R-023H Lot. No. (See product label)

SPECIFICATION

Product Overview	Recombinant Human CSF3R Protein with C-His tag was expressed in E. coli.
Species	Human
Source	E.coli
Description	<p>The diverse biological activities of G-CSF are initiated by the binding of G-CSF to a specific receptor (G-CSFR) that belongs to the cytokine/hematopoietic receptor superfamily. In contrast to the majority of hematopoietic receptors that are activated through the formation of heteromeric complexes composed of α, β and sometimes γ subunits, G-CSFR proteins are believed to form homodimeric complexes upon ligand binding. Four distinct alternative splice variants of G-CSFR have been described, one of which exists as a soluble receptor protein. Although G-CSFR lacks consensus motifs in its cytoplasmic domains that are characteristic of kinase activities, certain sequences have been identified that are conserved among several members of the cytokine receptor superfamily. For example, the carboxy terminal regions of G-CSFR contain a domain, designated box 3, that is only shared with the IL-6R subunit, gp130.</p>
Molecular Mass	~66 kDa
AA Sequence	<p>ECGHISVSAPIVHLGDPITASCIKQNCSHLDPEPQILWRLGAELQPGGRQQRLSDGT QESIITLPHLNHTQAFLSCCLNWGNSLQILDQVELRAGYPPAIPHNLSCLMNLTTSSLI CQWEPGPETHLPTSFTLKSFKSRGNCQTQGDSILDCVPKDGQSHCCIPRKHLLLYQ</p>

 Tel: 1-631-559-9269 1-516-512-3133

 Email: info@creative-biomart.com  Fax: 1-631-938-8127

 45-1 Ramsey Road, Shirley, NY 11967, USA

NMGIWVQAENALGTSMSPLCLDPMDVVKLEPPMLRTMDPSPEAAPPQAGCLQLC
 WEPWQPGLHINQKCELRHKPQRGEASWALVGPLPLEALQYELCGLLPATAYTLQIR
 CIRWPLPGHWSDWSPSLELRITTERAPTURLDTWWRQRQLDPRTVQLFWKVPLEE
 DSGRIQGYVSWRPSGQAGAILPLCNTTELSCTFHLPSEAQEVAVYNSAGTSRPT
 PVVFESERGPALTRLHAMARDPHSLWVGWEPPNPWPQGYVIEWWGLGPPSASNSN
 KTWRMEQNGRATGFLLENIRPFQLYEIIIVTPLYQDTMGPSQHVYAYSQEMAPSHA
 PELHLKHIGKTWAQLEWVPEPPELKGKSPHLYTIFWTNAQNQSFSAIYNASSRGRFVL
 HGLEPASLYHIHLMAASQAGATNSTVLTMLTLTPEGSELH

Purity

Transferred into competent cells and the supernatant was purified by NI column affinity chromatography and the purity is > 85% (by SDS-PAGE).

Notes

For research use only, not for use in diagnostic procedure.

Storage

Store at 4 centigrade short term. Aliquot and store at -20 centigrade long term. Avoid freeze-thaw cycles.

Concentration

≥0.5 mg/mL

Storage Buffer

PBS, 4M Urea, pH7.4

GENE INFORMATION

Gene Name

CSF3R colony stimulating factor 3 receptor (granulocyte) [Homo sapiens (human)]

Official Symbol

CSF3R

Synonyms

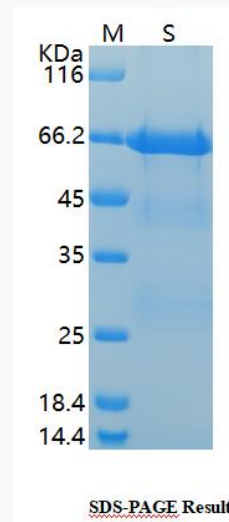
CSF3R; colony stimulating factor 3 receptor (granulocyte); CD114; granulocyte colony-stimulating factor receptor; GCSFR; G-CSF-R; CD114 antigen; G-CSF receptor;

 Tel: 1-631-559-9269 1-516-512-3133

 Email: info@creative-biomart.com  Fax: 1-631-938-8127

 45-1 Ramsey Road, Shirley, NY 11967, USA

Gene ID	1441
mRNA Refseq	NM_000760
Protein Refseq	NP_000751
MIM	138971
UniProt ID	Q99062

SDS-PAGE

 Tel: 1-631-559-9269 1-516-512-3133

 Email: info@creative-biomart.com  Fax: 1-631-938-8127

 45-1 Ramsey Road, Shirley, NY 11967, USA