

Active Recombinant Human CSF3R protein, His-tagged

Cat. No. CSF3R-8526H Lot. No. (See product label)

SPECIFICATION

Product Overview	Active Recombinant Human CSF3R protein(Met 1-Pro 621)(NP_000751.1) precursor was expressed in HEK293, fused with a polyhistidine tag at the C-terminus.
Species	Human
Source	HEK293
ProteinLength	1-621 aa
Form	Lyophilized from sterile PBS, pH 7.4.
Bio-activity	Measured by its ability to inhibit the G-CSF induced proliferation of NFS60 mouse myeloid cells. The ED50 for this effect is typically 20-80 ng/mL.
Molecular Mass	The mature recombinant human GCSFR consists of 608 amino acids and predicts a molecular mass of 68 kDa by SDS-PAGE under reducing conditions, the apparent molecular mass of rhGCSFR is approximately 92 kDa due to glycosylation.
Endotoxin	< 1 EU/g as determined by LAL test.
Purity	> 85 % as determined by SDS-PAGE
Storage	Store it under sterile conditions at -20°C to -80°C upon receiving. Recommend to aliquot the protein into smaller quantities for optimal storage. Avoid repeated freeze-thaw cycles.

 Tel: 1-631-559-9269 1-516-512-3133

 Email: info@creative-biomart.com  Fax: 1-631-938-8127

 45-1 Ramsey Road, Shirley, NY 11967, USA

Reconstitution It is recommended that sterile water be added to the vial to prepare a stock solution of 0.2 ug/ul. Centrifuge the vial at 4°C before opening to recover the entire contents.

GENE INFORMATION

Gene Name CSF3R colony stimulating factor 3 receptor (granulocyte) [Homo sapiens]

Official Symbol CSF3R

Synonyms CSF3R; colony stimulating factor 3 receptor (granulocyte); CD114; granulocyte colony-stimulating factor receptor; GCSFR; G-CSF-R; CD114 antigen; G-CSF receptor;

Gene ID 1441

mRNA Refseq NM_000760

Protein Refseq NP_000751

MIM 138971

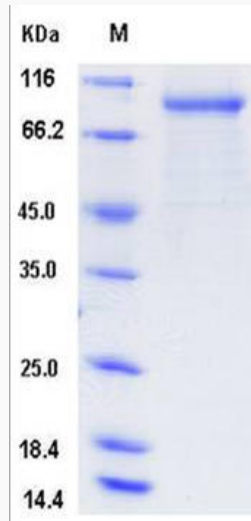
UniProt ID Q99062

 Tel: 1-631-559-9269 1-516-512-3133

 Email: info@creative-biomart.com  Fax: 1-631-938-8127

 45-1 Ramsey Road, Shirley, NY 11967, USA

SDS-PAGE



 Tel: 1-631-559-9269 1-516-512-3133

 Email: info@creative-biomart.com  Fax: 1-631-938-8127

 45-1 Ramsey Road, Shirley, NY 11967, USA