

## Active Recombinant Human CSH1 Protein, His-tagged

**Cat. No.** CSH1-007H    **Lot. No.** (See product label)

### SPECIFICATION

**Product Overview**      Recombinant Human CSH1 Protein (27-217aa) with His tag was expressed in insect cells.

**Species**                      Human

**Source**                        Insect Cells

**ProteinLength**              27-217aa

**Description**

The protein encoded by this gene is a member of the somatotropin/prolactin family of hormones and plays an important role in growth control. The gene is located at the growth hormone locus on chromosome 17 along with four other related genes in the same transcriptional orientation; an arrangement which is thought to have evolved by a series of gene duplications. Although the five genes share a remarkably high degree of sequence identity, they are expressed selectively in different tissues.

Alternative splicing generates additional isoforms of each of the five growth hormones, leading to further diversity and potential for specialization. This particular family member is expressed mainly in the placenta and utilizes multiple transcription initiation sites. Expression of the identical mature proteins for chorionic somatomammotropin hormones 1 and 2 is upregulated during development, although the ratio of 1 to 2 increases by term. Mutations in this gene result in placental lactogen deficiency and Silver-Russell syndrome.

**Form**                            Liquid

 Tel: 1-631-559-9269    1-516-512-3133

 Email: [info@creative-biomart.com](mailto:info@creative-biomart.com)     Fax: 1-631-938-8127

 45-1 Ramsey Road, Shirley, NY 11967, USA

<b>Bio-activity</b>	Measured in a cell proliferation assay using Nb2-11 Rat lymphoma cells. The ED50 range $\leq 0.8$ ng/mL.
<b>Molecular Mass</b>	23.1kDa (197aa)
<b>AA Sequence</b>	VQTVPLSRLFDHAMLQAHRAHQLAIDTYQEFEEYIPKDQKYSFLHDSQTSFCFSDSI PTPSNMEETQQKSNLELLRISLLIESWLEPVRFRLRSMFANNLVYDTSDDYHLLKD LEEGIQTLMGRLEDGSRRTGQILKQTYSKFDTNSHNHDALLKNYGLLYCFRKDMDK VETFLRMVQCRSVEGSCGF
<b>Endotoxin</b>	< 1 EU per 1 g of protein (determined by LAL method)
<b>Purity</b>	> 90% by SDS-PAGE
<b>Applications</b>	SDS-PAGE, Bioactivity
<b>Storage</b>	Can be stored at +2 to +8 centigrade for 1 week. For long term storage, aliquot and store at -20 to -80 centigrade. Avoid repeated freezing and thawing cycles.
<b>Concentration</b>	0.25 mg/mL (determined by Absorbance at 280nm)
<b>Storage Buffer</b>	In Phosphate-Buffered Saline (pH 7.4) containing 30% glycerol

## GENE INFORMATION

<b>Gene Name</b>	CSH1 chorionic somatomammotropin hormone 1 [ Homo sapiens (human) ]
<b>Official Symbol</b>	CSH1
<b>Synonyms</b>	CSH1; chorionic somatomammotropin hormone 1; PL; CSA; CS-1; CSMT; GHB3; hCS-1; hCS-A; chorionic somatomammotropin hormone 1; Chorionic

 Tel: 1-631-559-9269 1-516-512-3133

 Email: [info@creative-biomart.com](mailto:info@creative-biomart.com)  Fax: 1-631-938-8127

 45-1 Ramsey Road, Shirley, NY 11967, USA

somatomammotropin hormone 2; choriomammotropin; chorionic somatomammotropin A; chorionic somatomammotropin-1; growth hormone B3; placental lactogen

**Gene ID** 1442

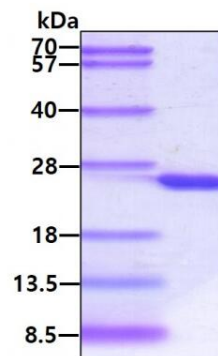
**mRNA Refseq** NM\_001317

**Protein Refseq** NP\_001308

**MIM** 150200

**UniProt ID** P0DML2

**SDS-PAGE**



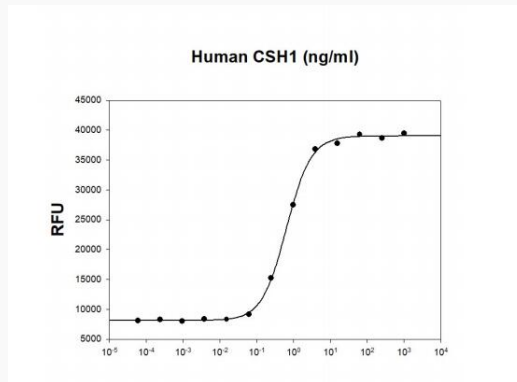
3 g by SDS-PAGE under reducing condition and visualized by coomassie blue stain

 Tel: 1-631-559-9269 1-516-512-3133

 Email: [info@creative-biomart.com](mailto:info@creative-biomart.com)  Fax: 1-631-938-8127

 45-1 Ramsey Road, Shirley, NY 11967, USA

**Biological Activity**



Human Angiopoietin-2 is coated at 5  $\mu$ g/ml (100  $\mu$ l/well) can bind Human Tie-2. The ED50 range  $\leq$  1  $\mu$ g/ml.

 Tel: 1-631-559-9269 1-516-512-3133

 Email: [info@creative-biomart.com](mailto:info@creative-biomart.com)  Fax: 1-631-938-8127

 45-1 Ramsey Road, Shirley, NY 11967, USA