

## Recombinant Human CSH1 Protein (Gln28-Arg193), N-His tagged

Cat. No. CSH1-1831H Lot. No. (See product label)

### SPECIFICATION

<b>Product Overview</b>	Recombinant human CSH1 (Gln28-Arg193) fused with N-His tag was expressed in E. coli.
<b>Species</b>	Human
<b>Source</b>	E.coli
<b>ProteinLength</b>	Gln28-Arg193
<b>Form</b>	Lyophilized powder/frozen liquid
<b>Molecular Mass</b>	21.61 kDa
<b>Purity</b>	>90% as determined by SDS-PAGE
<b>Notes</b>	For research use only.
<b>Storage</b>	Use a manual defrost freezer and avoid repeated freeze thaw cycles. Store at 2 to 8 centigrade for one week. Store at -20 to -80 centigrade for twelve months from the date of receipt.
<b>Storage Buffer</b>	0.01M PBS, pH 7.4, 0.02% NLS
<b>Reconstitution</b>	Reconstitute in sterile water for a stock solution.

 Tel: 1-631-559-9269 1-516-512-3133

 Email: [info@creative-biomart.com](mailto:info@creative-biomart.com)  Fax: 1-631-938-8127

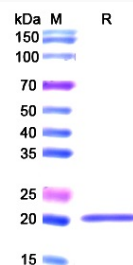
 45-1 Ramsey Road, Shirley, NY 11967, USA

**Shipping**

They are shipped out with dry ice/blue ice unless customers require otherwise.

**GENE INFORMATION**

<b>Gene Name</b>	CSH1 chorionic somatomammotropin hormone 1 (placental lactogen) [ Homo sapiens (human) ]
<b>Official Symbol</b>	CSH1
<b>Synonyms</b>	CSH1; chorionic somatomammotropin hormone 1 (placental lactogen); chorionic somatomammotropin hormone; choriomammotropin; chorionic somatomammotropin A; CSA; CSMT; FLJ75407; hCS A; PL; placental lactogen; CS-1; hCS-A;
<b>Gene ID</b>	1442
<b>mRNA Refseq</b>	NM_001317
<b>Protein Refseq</b>	NP_001308
<b>MIM</b>	150200
<b>UniProt ID</b>	P0DML2

**SDS-PAGE**


Tel: 1-631-559-9269 1-516-512-3133

Email: [info@creative-biomart.com](mailto:info@creative-biomart.com) Fax: 1-631-938-8127

45-1 Ramsey Road, Shirley, NY 11967, USA