

Recombinant Human CSH1 Protein (Val27-Phe217), C-His tagged

Cat. No. CSH1-1832H Lot. No. (See product label)

SPECIFICATION

| | |
|-------------------------|---|
| Product Overview | Recombinant human CSH1 (Val27-Phe217) fused with C-terminal His tag was expressed in Mammalian cells. |
| Species | Human |
| Source | Mammalian Cells |
| ProteinLength | Val27-Phe217 |
| Form | Lyophilized powder/frozen liquid |
| Molecular Mass | 21.01 kDa |
| Purity | >90% as determined by SDS-PAGE |
| Notes | For research use only. |
| Storage | Use a manual defrost freezer and avoid repeated freeze thaw cycles. Store at 2 to 8 centigrade for one week. Store at -20 to -80 centigrade for twelve months from the date of receipt. |
| Storage Buffer | Supplied as solution form in PBS or lyophilized from PBS. |
| Reconstitution | Reconstitute in sterile water for a stock solution. |

 Tel: 1-631-559-9269 1-516-512-3133

 Email: info@creative-biomart.com  Fax: 1-631-938-8127

 45-1 Ramsey Road, Shirley, NY 11967, USA

Shipping They are shipped out with dry ice/blue ice unless customers require otherwise.

GENE INFORMATION

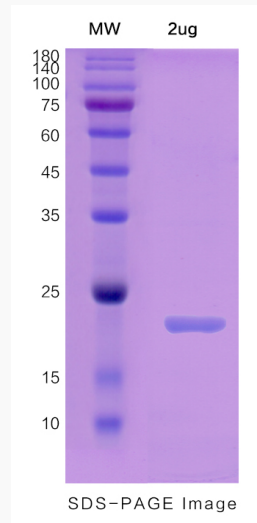
| | |
|------------------------|---|
| Gene Name | CSH1 chorionic somatomammotropin hormone 1 (placental lactogen) [Homo sapiens (human)] |
| Official Symbol | CSH1 |
| Synonyms | CSH1; chorionic somatomammotropin hormone 1 (placental lactogen); chorionic somatomammotropin hormone; choriomammotropin; chorionic somatomammotropin A; CSA; CSMT; FLJ75407; hCS A; PL; placental lactogen; CS-1; hCS-A; |
| Gene ID | 1442 |
| mRNA Refseq | NM_001317 |
| Protein Refseq | NP_001308 |
| MIM | 150200 |
| UniProt ID | P0DML2 |

 Tel: 1-631-559-9269 1-516-512-3133

 Email: info@creative-biomart.com  Fax: 1-631-938-8127

 45-1 Ramsey Road, Shirley, NY 11967, USA

SDS-PAGE



 Tel: 1-631-559-9269 1-516-512-3133

 Email: info@creative-biomart.com  Fax: 1-631-938-8127

 45-1 Ramsey Road, Shirley, NY 11967, USA