

Recombinant Human CSH1 Protein, GST-tagged

Cat. No. CSH1-1976H Lot. No. (See product label)

SPECIFICATION

Product Overview	Human CSH1 full-length ORF (AAH02717, 1 a.a. - 217 a.a.) recombinant protein with GST-tag at N-terminal.
Species	Human
Source	Wheat Germ
Description	<p>The protein encoded by this gene is a member of the somatotropin/prolactin family of hormones and plays an important role in growth control. The gene is located at the growth hormone locus on chromosome 17 along with four other related genes in the same transcriptional orientation; an arrangement which is thought to have evolved by a series of gene duplications. Although the five genes share a remarkably high degree of sequence identity, they are expressed selectively in different tissues.</p> <p>Alternative splicing generates additional isoforms of each of the five growth hormones, leading to further diversity and potential for specialization. This particular family member is expressed mainly in the placenta and utilizes multiple transcription initiation sites. Expression of the identical mature proteins for chorionic somatomammotropin hormones 1 and 2 is upregulated during development, although the ratio of 1 to 2 increases by term. Mutations in this gene result in placental lactogen deficiency and Silver-Russell syndrome. [provided by RefSeq, Jul 2008]</p>
Molecular Mass	49.61 kDa
AA Sequence	MAPGSRTSLLLFALLCLPWLQEAGAVQTVPLSRLFDHAMLQAHRAHQLAIDTYQEF

 Tel: 1-631-559-9269 1-516-512-3133

 Email: info@creative-biomart.com  Fax: 1-631-938-8127

 45-1 Ramsey Road, Shirley, NY 11967, USA



EETYIPKDQKYSFLHDSQTSSCFSDSIPTSPNMEETQQKSNLELLRISLLLIESWLEPV
RFLRSMFANNLVYDTSDDYHLLKDLEEGIQTLMGRLEDGSRRTGQILKQTYSKFD
TNSHNHDALLKNYGLLYCFRKDTDKVETFLRMVQCRSVEGSCGF

Applications	Enzyme-linked Immunoabsorbent Assay Western Blot (Recombinant protein) Antibody Production Protein Array
Notes	Best use within three months from the date of receipt of this protein.
Storage	Store at -80 centigrade. Aliquot to avoid repeated freezing and thawing.
Storage Buffer	50 mM Tris-HCl, 10 mM reduced Glutathione, pH=8.0 in the elution buffer.

GENE INFORMATION

Gene Name	CSH1 chorionic somatomammotropin hormone 1 (placental lactogen) [Homo sapiens]
Official Symbol	CSH1
Synonyms	CSH1; chorionic somatomammotropin hormone 1 (placental lactogen); chorionic somatomammotropin hormone; choriomammotropin; chorionic somatomammotropin A; CSA; CSMT; FLJ75407; hCS A; PL; placental lactogen; CS-1; hCS-A;
Gene ID	1442
mRNA Refseq	NM_001317
Protein Refseq	NP_001308

Tel: 1-631-559-9269 1-516-512-3133

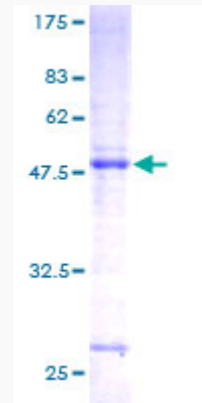
Email: info@creative-biomart.com Fax: 1-631-938-8127

45-1 Ramsey Road, Shirley, NY 11967, USA

MIM 150200

UniProt ID P01243

**Quality Control
Testing:**



12.5% SDS-PAGE Stained with Coomassie Blue.

 Tel: 1-631-559-9269 1-516-512-3133

 Email: info@creative-biomart.com  Fax: 1-631-938-8127

 45-1 Ramsey Road, Shirley, NY 11967, USA