

Recombinant Human CSH1 Protein, Myc/DDK-tagged, C13 and N15-labeled

Cat. No. CSH1-5313H **Lot. No.** (See product label)

SPECIFICATION

Product Overview CSH1 MS Standard C13 and N15-labeled recombinant protein (NP_001308) with a C-terminal MYC/DDK tag, was expressed in HEK293 cells.

Species Human

Source HEK293

Description The protein encoded by this gene is a member of the somatotropin/prolactin family of hormones and plays an important role in growth control. The gene is located at the growth hormone locus on chromosome 17 along with four other related genes in the same transcriptional orientation; an arrangement which is thought to have evolved by a series of gene duplications. Although the five genes share a remarkably high degree of sequence identity, they are expressed selectively in different tissues. Alternative splicing generates additional isoforms of each of the five growth hormones, leading to further diversity and potential for specialization. This particular family member is expressed mainly in the placenta and utilizes multiple transcription initiation sites. Expression of the identical mature proteins for chorionic somatomammotropin hormones 1 and 2 is upregulated during development, although the ratio of 1 to 2 increases by term. Mutations in this gene result in placental lactogen deficiency and Silver-Russell syndrome.

Molecular Mass 25 kDa

 Tel: 1-631-559-9269 1-516-512-3133

 Email: info@creative-biomart.com  Fax: 1-631-938-8127

 45-1 Ramsey Road, Shirley, NY 11967, USA

AA Sequence	MAPGSRTSLLLAFALLCLPWLQEAGAVQTVPLSRLFDHAMLQAHRAHQLAIDTYQEF EETYIPKDQKYSFLHDSQTSFCFSDSIPTPSNMEETQQKSNLELLRISLLIESWLEPV RFLRSMFANNLVYDTSDSDDYHLLKDLEEGIQTLMGRLEDGSRRTGQILKQTYSKFD TNSHNHDALLKNYGLLYCFRKDMDKVETFLRMVQCRSVEGSCGFTRTRPLEQKLIS EEDLAANDILDYKDDDDKV
Purity	> 80% as determined by SDS-PAGE and Coomassie blue staining
Stability	Stable for 3 months from receipt of products under proper storage and handling conditions.
Storage	Store at -80 centigrade. Avoid repeated freeze-thaw cycles.
Concentration	50 µg/mL as determined by BCA
Storage Buffer	100 mM glycine, 25 mM Tris-HCl, pH 7.3.

GENE INFORMATION

Gene Name	CSH1 chorionic somatomammotropin hormone 1 [Homo sapiens (human)]
Official Symbol	CSH1
Synonyms	CSH1; chorionic somatomammotropin hormone 1 (placental lactogen); chorionic somatomammotropin hormone; choriomammotropin; chorionic somatomammotropin A; CSA; CSMT; FLJ75407; hCS A; PL; placental lactogen; CS-1; hCS-A;
Gene ID	1442
mRNA Refseq	NM_001317

 Tel: 1-631-559-9269 1-516-512-3133

 Email: info@creative-biomart.com  Fax: 1-631-938-8127

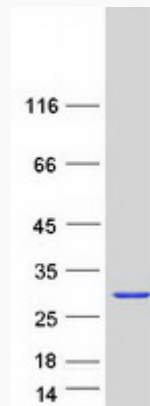
 45-1 Ramsey Road, Shirley, NY 11967, USA

Protein Refseq NP_001308

MIM 150200

UniProt ID P01243

SDS-PAGE



 Tel: 1-631-559-9269 1-516-512-3133

 Email: info@creative-biomart.com  Fax: 1-631-938-8127

 45-1 Ramsey Road, Shirley, NY 11967, USA