

## Recombinant Human CSK Protein, GST-tagged

Cat. No. CSK-0765H Lot. No. (See product label)

### SPECIFICATION

<b>Product Overview</b>	Recombinant Human CSK Protein(NP_004374.1) (Met 1-Leu 450) was expressed in Insect Cells, fused with the GST tag at the N-terminus.
<b>Species</b>	Human
<b>Source</b>	Insect Cells
<b>ProteinLength</b>	1-450 aa
<b>Form</b>	Supplied as sterile 20mM Tris, 500mM NaCl, 0.5mM PMSF, pH 7.4.
<b>Bio-activity</b>	The specific activity was determined to be 127 nmol/min/mg using Poly(Glu,Tyr) 4:1 as substrate.
<b>Molecular Mass</b>	The recombinant human CSK/GST chimera consists of 674 amino acids and has a predicted molecular mass of 77 kDa. It migrates as an approximately 66 kDa band in SDS-PAGE under reducing conditions.
<b>Endotoxin</b>	< 1.0 EU per µg of the protein as determined by the LAL method.
<b>Purity</b>	> 92 % as determined by SDS-PAGE
<b>Storage</b>	Store it under sterile conditions at -20°C to -80°C upon receiving. Recommend to aliquot the protein into smaller quantities for optimal storage. Avoid repeated freeze-thaw cycles.

 Tel: 1-631-559-9269 1-516-512-3133

 Email: [info@creative-biomart.com](mailto:info@creative-biomart.com)  Fax: 1-631-938-8127

 45-1 Ramsey Road, Shirley, NY 11967, USA

**Reconstitution** It is recommended that sterile water be added to the vial to prepare a stock solution of 0.2 ug/ul. Centrifuge the vial at 4°C before opening to recover the entire contents.

## GENE INFORMATION

**Gene Name** CSK c-src tyrosine kinase [ Homo sapiens ]

**Official Symbol** CSK

**Synonyms** CSK; c-src tyrosine kinase; tyrosine-protein kinase CSK; C-Src kinase; protein-tyrosine kinase CYL; MGC117393;

**Gene ID** 1445

**mRNA Refseq** NM\_001127190


**Protein Refseq** NP\_001120662

**MIM** 124095

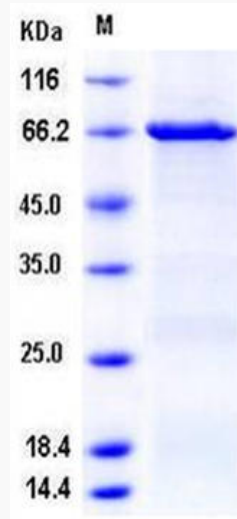
**UniProt ID** P41240


 Tel: 1-631-559-9269 1-516-512-3133

 Email: [info@creative-biomart.com](mailto:info@creative-biomart.com)  Fax: 1-631-938-8127

 45-1 Ramsey Road, Shirley, NY 11967, USA

SDS-PAGE



 Tel: 1-631-559-9269 1-516-512-3133

 Email: [info@creative-biomart.com](mailto:info@creative-biomart.com)  Fax: 1-631-938-8127

 45-1 Ramsey Road, Shirley, NY 11967, USA