

Recombinant Human CSK Protein, GST-tagged

Cat. No. CSK-1979H **Lot. No.** (See product label)

SPECIFICATION

Product Overview	Human CSK full-length ORF (NP_004374.1, 1 a.a. - 450 a.a.) recombinant protein with GST-tag at N-terminal.
Species	Human
Source	Wheat Germ
Description	CSK (C-Terminal Src Kinase) is a Protein Coding gene. Diseases associated with CSK include Colorectal Cancer and Breast Cancer. Among its related pathways are ICos-ICosL Pathway in T-Helper Cell and RET signaling. GO annotations related to this gene include identical protein binding and protein kinase activity. An important paralog of this gene is MATK.
Molecular Mass	75.13 kDa
AA Sequence	MSAIQAAWPSGTECIAKYNFHGTAEQDLPFCKGDVLTIVAVTKDPNWKAKNKVGR EGIIPANYVQKREGVKAGTKLSLMPWFHGGKITREQAERLLYPPETGLFLVRESTNYP GDYTLCVSCDGKVEHYRIMYHASKLSIDEEVYFENLMQLVEHYTSDADGLCTRLIKP KVMEGTVAAQDEFYRSGWALNMKELKLLQTIGKGEFGDVMLGDYRGNKVAVKCIK NDATAQAFLAEASVMTQLRHSNLVQLLGVIVEEKGGYIVTEYMAKGSLVDYLRSRG RSVLGGDCLLKFSLDVCEAMEYLEGNFVHRDLAARNVLVSEDNVAKVSDFGLTKE ASSTQDTGKLPVKWTAPEALREKKFSTKSDVWSFGILLWEIYSFGRVPYPRIPKDV VPRVEKGYKMDAPDGCPPAVYEVKNCWHLDAAMRPSFLQLREQLHIKTHELHL
Applications	Enzyme-linked Immunoabsorbent Assay

 Tel: 1-631-559-9269 1-516-512-3133

 Email: info@creative-biomart.com  Fax: 1-631-938-8127

 45-1 Ramsey Road, Shirley, NY 11967, USA

	Western Blot (Recombinant protein) Antibody Production Protein Array
Notes	Best use within three months from the date of receipt of this protein.
Storage	Store at -80 centigrade. Aliquot to avoid repeated freezing and thawing.
Storage Buffer	50 mM Tris-HCl, 10 mM reduced Glutathione, pH=8.0 in the elution buffer.

GENE INFORMATION

Gene Name	CSK c-src tyrosine kinase [Homo sapiens]
Official Symbol	CSK
Synonyms	CSK; c-src tyrosine kinase; tyrosine-protein kinase CSK; C-Src kinase; protein-tyrosine kinase CYL; MGC117393;
Gene ID	1445
mRNA Refseq	NM_001127190
Protein Refseq	NP_001120662
MIM	124095
UniProt ID	P41240

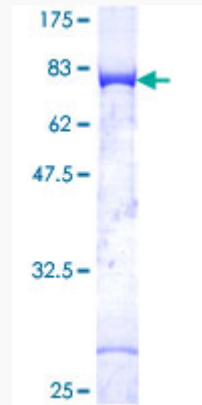
 Tel: 1-631-559-9269 1-516-512-3133

 Email: info@creative-biomart.com  Fax: 1-631-938-8127

 45-1 Ramsey Road, Shirley, NY 11967, USA

Quality Control

Testing:



12.5% SDS-PAGE Stained with Coomassie Blue.

 Tel: 1-631-559-9269 1-516-512-3133

 Email: info@creative-biomart.com  Fax: 1-631-938-8127

 45-1 Ramsey Road, Shirley, NY 11967, USA