

## Native Human COP9 signalosome Protein

Cat. No. CSN-36H Lot. No. (See product label)

### SPECIFICATION

<b>Product Overview</b>	Purified from human blood cells by fractination. The highest activity, soluble and homogenous.
<b>Species</b>	Human
<b>Source</b>	Blood cell
<b>Description</b>	<p>Originally identified in Arabidopsis as a suppressor of light-dependent development and is essential for development in plants, and is itself both a target for kinase activity and associates with and coordinates activity of kinases. Although the CSN complex and the 'lid' of the 19S regulator of the 26S proteasome share significant structural similarities, their functions seem to be different and neither protein-protein interactions nor associated activities described for the CSN have been identified for the 19S'lid'. The CSN appears to be a platform connecting signaling with degradation by the 26S proteasome.</p>
<b>Tag</b>	Non
<b>Form</b>	Liquid
<b>Storage</b>	At -80 centigrade
<b>Storage Buffer</b>	In 20mM TRIS, pH 7.2, containing 10 % glycerol, 50mM KCl and 1mM mercaptoethanol.

 Tel: 1-631-559-9269 1-516-512-3133

 Email: [info@creative-biomart.com](mailto:info@creative-biomart.com)  Fax: 1-631-938-8127

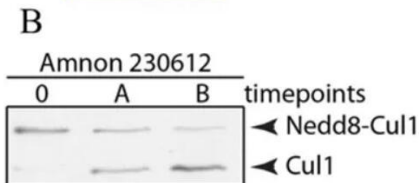
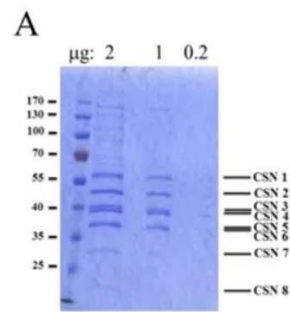
 45-1 Ramsey Road, Shirley, NY 11967, USA

**Shipping** Dry ice

## GENE INFORMATION

**Official Symbol** CSN

**Synonyms** COP9 signalosome; CSN



Tel: 1-631-559-9269 1-516-512-3133

Email: [info@creative-biomart.com](mailto:info@creative-biomart.com) Fax: 1-631-938-8127

45-1 Ramsey Road, Shirley, NY 11967, USA