

## Recombinant Human CSN1S1 Protein, GST-tagged

**Cat. No.** CSN1S1-1982H    **Lot. No.** (See product label)

### SPECIFICATION

<b>Product Overview</b>	Human CSN1S1 full-length ORF ( NP_001881.1, 1 a.a. - 185 a.a.) recombinant protein with GST-tag at N-terminal.
<b>Species</b>	Human
<b>Source</b>	Wheat Germ
<b>Description</b>	CSN1S1 (Casein Alpha S1) is a Protein Coding gene. Diseases associated with CSN1S1 include Goat Milk Allergy and Milk Allergy. GO annotations related to this gene include transporter activity.
<b>Molecular Mass</b>	48.1 kDa
<b>AA Sequence</b>	MRLILITCLVAVALARPKLPLRYPERLQNPSESSEPIPLESREEYMNGMNRQRNILRE KQTDEIKDTRNESTQNCVVAEPEKMESSISSSSEMSLSKCAEQFCRLNEYNQLQL QAAHAQEQIRRMNENSHVQVPFQQLNQLAAYPYAVWYYPQIMQYVPPFPFSDISNP TAHENYEKNNVMLQW
<b>Applications</b>	Enzyme-linked Immunoabsorbent Assay Western Blot (Recombinant protein) Antibody Production Protein Array
<b>Notes</b>	Best use within three months from the date of receipt of this protein.

 Tel: 1-631-559-9269    1-516-512-3133

 Email: [info@creative-biomart.com](mailto:info@creative-biomart.com)     Fax: 1-631-938-8127

 45-1 Ramsey Road, Shirley, NY 11967, USA

**Storage** Store at -80 centigrade. Aliquot to avoid repeated freezing and thawing.

**Storage Buffer** 50 mM Tris-HCl, 10 mM reduced Glutathione, pH=8.0 in the elution buffer.

## GENE INFORMATION

**Gene Name** CSN1S1 casein alpha s1 [ Homo sapiens ]

**Official Symbol** CSN1S1

**Synonyms** CSN1S1; casein alpha s1; CASA, casein, alpha , CSN1; alpha-S1-casein; casein, alpha; CASA; CSN1; MGC149368;

**Gene ID** 1446

**mRNA Refseq** NM\_001025104

**Protein Refseq** NP\_001020275

**MIM** 115450

**UniProt ID** P47710

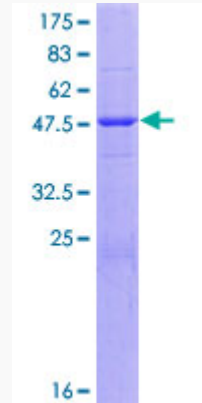
 Tel: 1-631-559-9269 1-516-512-3133

 Email: [info@creative-biomart.com](mailto:info@creative-biomart.com)  Fax: 1-631-938-8127

 45-1 Ramsey Road, Shirley, NY 11967, USA

**Quality Control**

**Testing:**



12.5% SDS-PAGE Stained with Coomassie Blue.

 Tel: 1-631-559-9269 1-516-512-3133

 Email: [info@creative-biomart.com](mailto:info@creative-biomart.com)  Fax: 1-631-938-8127

 45-1 Ramsey Road, Shirley, NY 11967, USA