

# Active Recombinant Human CSNK1A1 Protein, GST-His-tagged

Cat. No. CSNK1A1-1986H    Lot. No. (See product label)

## SPECIFICATION

<b>Product Overview</b>	Human CSNK1A1 (DQ082865, 1 a.a. - 365 a.a.) full-length recombinant protein with GST-His tag expressed in Sf9 cells.
<b>Species</b>	Human
<b>Source</b>	Insect Cells
<b>Description</b>	CSNK1A1 (Casein Kinase 1 Alpha 1) is a Protein Coding gene. Among its related pathways are NFAT and Cardiac Hypertrophy and Signaling by Wnt. GO annotations related to this gene include transferase activity, transferring phosphorus-containing groups and protein tyrosine kinase activity. An important paralog of this gene is CSNK1A1L.
<b>Form</b>	Liquid
<b>Bio-activity</b>	3 pmol/μg x min
<b>Molecular Mass</b>	71.434 kDa
<b>Applications</b>	Functional Study SDS-PAGE
<b>Storage</b>	Store at -80 centigrade. Aliquot to avoid repeated freezing and thawing.

 Tel: 1-631-559-9269    1-516-512-3133

 Email: [info@creative-biomart.com](mailto:info@creative-biomart.com)     Fax: 1-631-938-8127

 45-1 Ramsey Road, Shirley, NY 11967, USA

**Concentration** 0.058 µg/µL

**Storage Buffer** In 50 mM Tris-HCl, 100 mM NaCl, pH 8.0. (5 mM DTT, 4 mM reduced glutathione, 20% glycerol)

## GENE INFORMATION

**Gene Name** [CSNK1A1 casein kinase 1, alpha 1 \[ Homo sapiens \]](#)

**Official Symbol** [CSNK1A1](#)

**Synonyms** CSNK1A1; casein kinase 1, alpha 1; casein kinase I isoform alpha; CK1; CK1a; CK1alpha; CK1a; CK1alpha; clock regulator kinase; CKI-alpha; down-regulated in lung cancer; HLCDGP1; PRO2975;

**Gene ID** [1452](#)

**mRNA Refseq** [NM\\_001025105](#)

**Protein Refseq** [NP\\_001020276](#)

**MIM** [600505](#)

**UniProt ID** [P48729](#)

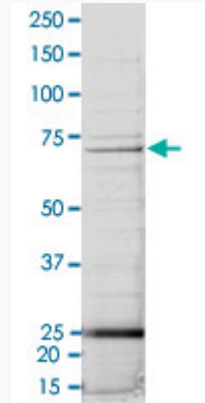
 Tel: 1-631-559-9269 1-516-512-3133

 Email: [info@creative-biomart.com](mailto:info@creative-biomart.com)  Fax: 1-631-938-8127

 45-1 Ramsey Road, Shirley, NY 11967, USA

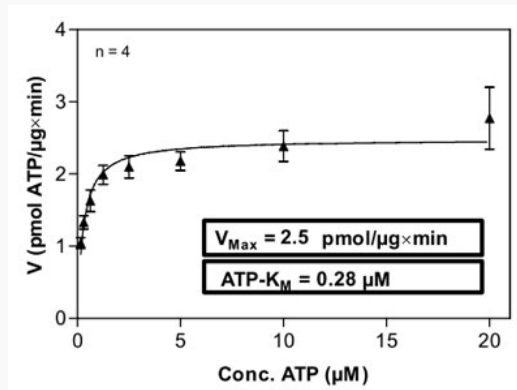
**Quality Control**

**Testing:**



2 µg/lane SDS-PAGE Stained with Coomassie Blue

**Result of activity analysis**



 Tel: 1-631-559-9269 1-516-512-3133

 Email: [info@creative-biomart.com](mailto:info@creative-biomart.com)  Fax: 1-631-938-8127

 45-1 Ramsey Road, Shirley, NY 11967, USA