

Recombinant Human CSNK1A1 Protein, GST-tagged

Cat. No. CSNK1A1-1988H **Lot. No.** (See product label)

SPECIFICATION

Product Overview	Human CSNK1A1 full-length ORF (NP_001883.4, 1 a.a. - 337 a.a.) recombinant protein with GST-tag at N-terminal.
Species	Human
Source	Wheat Germ
Description	CSNK1A1 (Casein Kinase 1 Alpha 1) is a Protein Coding gene. Among its related pathways are NFAT and Cardiac Hypertrophy and Signaling by Wnt. GO annotations related to this gene include transferase activity, transferring phosphorus-containing groups and protein tyrosine kinase activity. An important paralog of this gene is CSNK1A1L.
Molecular Mass	65.3 kDa
AA Sequence	<p>MASSSGSKAEFIVGGKYKLVRKIGSGSFGDIYLAINITNGEEVAVKLESQKARHPQLL YESKLYKILQGGVGIPHIRWYGQEKDYNVLMDLLGPSLEDLFNFCSSRRFTMKTVLM LADQMISRIEYVHTKNFIHRDIKPDNFLMGIGRHCNKLFLIDFGLAKKYRDNRTQRHIP YREDKNLTGTARYASINAHLGIEQSRRDDMESLGYVLMYFNRTSLPWQGLKAATKK QKYEKISEKKMSTPVEVLCKGFPAEFAMYLNYCRGLRFEEAPDYMYLRQLFRILFRT LNHQYDYTFDWTMLKQKAAQQAASSSGQGQQAQTPTGKQTDKTKSNMKGK</p>
Applications	<p>Enzyme-linked Immunoabsorbent Assay Western Blot (Recombinant protein) Antibody Production</p>

 Tel: 1-631-559-9269 1-516-512-3133

 Email: info@creative-biomart.com  Fax: 1-631-938-8127

 45-1 Ramsey Road, Shirley, NY 11967, USA

Protein Array

Notes	Best use within three months from the date of receipt of this protein.
Storage	Store at -80 centigrade. Aliquot to avoid repeated freezing and thawing.
Storage Buffer	50 mM Tris-HCl, 10 mM reduced Glutathione, pH=8.0 in the elution buffer.

GENE INFORMATION

Gene Name	CSNK1A1 casein kinase 1, alpha 1 [Homo sapiens]
Official Symbol	CSNK1A1
Synonyms	CSNK1A1; casein kinase 1, alpha 1; casein kinase I isoform alpha; CK1; CK1a; CK1alpha; CK1a; CK1alpha; clock regulator kinase; CKI-alpha; down-regulated in lung cancer; HLCDGP1; PRO2975;
Gene ID	1452
mRNA Refseq	NM_001025105
Protein Refseq	NP_001020276
MIM	600505
UniProt ID	P48729

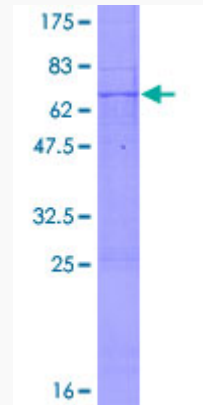
 Tel: 1-631-559-9269 1-516-512-3133

 Email: info@creative-biomart.com  Fax: 1-631-938-8127

 45-1 Ramsey Road, Shirley, NY 11967, USA

Quality Control

Testing:



12.5% SDS-PAGE Stained with Coomassie Blue.

 Tel: 1-631-559-9269 1-516-512-3133

 Email: info@creative-biomart.com  Fax: 1-631-938-8127

 45-1 Ramsey Road, Shirley, NY 11967, USA