

## Recombinant Human CSNK1A1 protein, His & T7-tagged

Cat. No. CSNK1A1-740H Lot. No. (See product label)

### SPECIFICATION

|                         |  |
|-------------------------|--|
| <b>Product Overview</b> | Recombinant Human CSNK1A1 aa. (Lys130~Phe337 (Accession # P48729)) fused with N-terminal His & T7 tag was produced in E. coli cells.   |
| <b>Species</b>          | Human  |
| <b>Source</b>           | E.coli   |
| <b>ProteinLength</b>    | Lys130~Phe337  |
| <b>Description</b>      | Casein kinases are operationally defined by their preferential utilization of acidic proteins such as caseins as substrates. It can phosphorylate a large number of proteins. Participates in Wnt signaling. |
| <b>Form</b>             | Freeze-dried powder  |
| <b>Molecular Mass</b>   | Predicted isoelectric point: 9.8   |
| <b>Endotoxin</b>        | <1.0EU per 1g (determined by the LAL method)   |
| <b>Purity</b>           | >95%   |
| <b>Characteristic</b>   | The isoelectric point is 9.8.  |
| <b>Applications</b>     | SDS-PAGE; WB; ELISA; IP.   |

 Tel: 1-631-559-9269 1-516-512-3133

 Email: [info@creative-biomart.com](mailto:info@creative-biomart.com)  Fax: 1-631-938-8127

 45-1 Ramsey Road, Shirley, NY 11967, USA

|                       |   |
|-----------------------|---|
| <b>Stability</b>      | The thermal stability is described by the loss rate. The loss rate was determined by accelerated thermal degradation test, that is, incubate the protein at 37°C for 48h, and no obvious degradation and precipitation were observed. The loss rate is less than 5% within the expiration date under appropriate storage condition. |
| <b>Storage</b>        | Avoid repeated freeze/thaw cycles. Store at 2-8°C for one month. Aliquot and store at -80°C for 12 months.  |
| <b>Storage buffer</b> | Supplied as lyophilized form in PBS, pH7.4, containing 5% sucrose, 0.01% sarcosyl.  |
| <b>Reconstitution</b> | Reconstitute in sterile PBS, pH7.2-pH7.4.   |

## GENE INFORMATION

|                        |  |
|------------------------|--|
| <b>Gene Name</b>       | CSNK1A1 casein kinase 1 alpha 1 [ Homo sapiens (human) ]   |
| <b>Official Symbol</b> | CSNK1A1  |
| <b>Synonyms</b>        | CK1; CK1a; CK1a; HLCDGP1; PRO2975; HEL-S-77p; CKI-alpha; clock regulator kinase; down-regulated in lung cancer; epididymis secretory sperm binding protein Li 77p; casein kinase I isoform alpha |
| <b>Gene ID</b>         | 1452   |
| <b>mRNA Refseq</b>     | NM_001025105.2   |
| <b>Protein Refseq</b>  | NP_001020276.1   |
| <b>UniProt ID</b>      | P48729   |

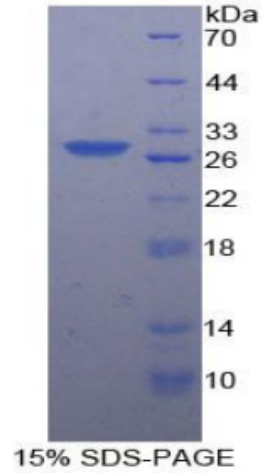
 Tel: 1-631-559-9269 1-516-512-3133

 Email: [info@creative-biomart.com](mailto:info@creative-biomart.com)  Fax: 1-631-938-8127

 45-1 Ramsey Road, Shirley, NY 11967, USA



SDS-PAGE



Tel: 1-631-559-9269 1-516-512-3133

Email: [info@creative-biomart.com](mailto:info@creative-biomart.com) Fax: 1-631-938-8127

45-1 Ramsey Road, Shirley, NY 11967, USA