

Recombinant Human CSNK1D protein, His-tagged

Cat. No. CSNK1D-4604H Lot. No. (See product label)

SPECIFICATION

Product Overview	Recombinant Human CSNK1D protein(P48730)(1-415 aa), fused with C-terminal His tag, was expressed in E.coli.
Species	Human
Source	E.coli
ProteinLength	1-415 aa
Form	For liquid formulations, the standard storage buffer consists of a Tris or PBS based solution supplemented with 5-50% glycerol. When provided as lyophilized powder, the product undergoes freeze-drying from a Tris- or PBS-based formulation containing 6% trehalose, adjusted to pH 8.0 prior to the lyophilization process.
Molecular Mass	54.2 kDa
AASequence	MELRVGNRYRLGRKIGSGSFGDIYLGTDIAAGEEVAIKLECVKTKHPQLHIESKIYKM MQGGVGIPTIRWCGAEGDYNVMVMELLGPSLEDLFNFC SRKFSLKTVLLLADQMIS RIEYIHSKNFIHRDVKPDNFLMGLGKKGNLVYIIDFGLAKKYRDARTHQHIPPYRENKNL TGTARYASINTHLGIEQSRRDDLES LGYVLMYFNLGSLPWQGLKAATKRQKYERISE KKMSTPIEVLC KGYPSEFATYLNFCRSLRFDDKPDYSYLRQLFRNFLFHRQGF SYDYV FDWNMLKFGASRAADDAERERRDREERLRHSRNPATRGLPSTASGRLRGTQE VAP PTPLTPTSHTANTSPRPVSGMERERK VSMRLHRGAPVNISSDLTGRQDTSRMSTS QIPGRVASSGLQSVVHR

 Tel: 1-631-559-9269 1-516-512-3133

 Email: info@creative-biomart.com  Fax: 1-631-938-8127

 45-1 Ramsey Road, Shirley, NY 11967, USA

Purity	Greater than 85% as determined by SDS-PAGE.
Storage	Store at -20°C/-80°C upon receipt, aliquoting is necessary for mutiple use. Avoid repeated freeze-thaw cycles.
Reconstitution	Please reconstitute protein indeionized sterile water to a concentration of 0.1-1.0 mg/mL. Aliquot for long-term storage at -80°C.

GENE INFORMATION

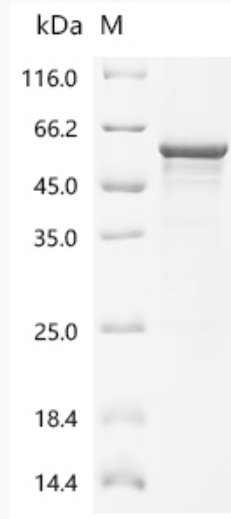
Gene Name	CSNK1D casein kinase 1, delta [Homo sapiens]
Official Symbol	CSNK1D
Synonyms	CSNK1D; casein kinase 1, delta; casein kinase I isoform delta; CKID; CKIdelta; HCKID; CKId; CKI-delta; tau-protein kinase CSNK1D;
Gene ID	1453
mRNA Refseq	NM_001893
Protein Refseq	NP_001884
MIM	600864
UniProt ID	P48730

 Tel: 1-631-559-9269 1-516-512-3133

 Email: info@creative-biomart.com  Fax: 1-631-938-8127

 45-1 Ramsey Road, Shirley, NY 11967, USA

SDS-PAGE



 Tel: 1-631-559-9269 1-516-512-3133

 Email: info@creative-biomart.com  Fax: 1-631-938-8127

 45-1 Ramsey Road, Shirley, NY 11967, USA