

Recombinant Human CSNK1E Protein, GST-tagged

Cat. No. CSNK1E-1995H Lot. No. (See product label)

SPECIFICATION

Product Overview	Human CSNK1E full-length ORF (NP_001885.1, 1 a.a. - 416 a.a.) recombinant protein with GST-tag at N-terminal.
Species	Human
Source	Wheat Germ
Description	<p>The protein encoded by this gene is a serine/threonine protein kinase and a member of the casein kinase I protein family, whose members have been implicated in the control of cytoplasmic and nuclear processes, including DNA replication and repair.</p> <p>The encoded protein is found in the cytoplasm as a monomer and can phosphorylate a variety of proteins, including itself. This protein has been shown to phosphorylate period, a circadian rhythm protein. Two transcript variants encoding the same protein have been found for this gene. [provided by RefSeq, Feb 2014]</p>
Molecular Mass	73.7 kDa
AA Sequence	<p>MELRVGNKYRLGRKIGSGSFGDIYLGANIASGEEVAIKLECVKTKHPQLHIESKFYKM MQGGVGIPSIKWCGAEGDYNVMVMELLGPSLEDLNFNFCSRKFSLKTVLLLADQMIS RIEYIHSKNFIHRDVKPDNFLMGLGKKGNLVYIIDFGLAKKYRDARTHQHIPPYRENKNL TGTARYASINHLGIEQSRRDDLES LGYVLMYFNLGSLPWQGLKAATKRQKYERISE KKMSTPIEVLCKGYPSEFSTYLNFCRSLRFDDKPDYSYLRQLFRNLFHRQGFSYDYV FDWNMLKFGAARNPEDVDREHEREERMGQLRGSATRALPPGPPTGATANRL RSAAEPVASTPASRIQPAGNTSPRAISRVDREKRVSMRLHRGAPANVSSSDLTGRQ</p>

 Tel: 1-631-559-9269 1-516-512-3133

 Email: info@creative-biomart.com  Fax: 1-631-938-8127

 45-1 Ramsey Road, Shirley, NY 11967, USA

EVSRIPASQTSVFPDHLGK

Applications

Enzyme-linked Immunoabsorbent Assay
 Western Blot (Recombinant protein)
 Antibody Production
 Protein Array

Notes

Best use within three months from the date of receipt of this protein.

Storage

Store at -80 centigrade. Aliquot to avoid repeated freezing and thawing.

Storage Buffer

50 mM Tris-HCl, 10 mM reduced Glutathione, pH=8.0 in the elution buffer.

GENE INFORMATION

Gene Name

CSNK1E casein kinase 1, epsilon [Homo sapiens]

Official Symbol

CSNK1E

Synonyms

CSNK1E; casein kinase 1, epsilon; casein kinase I isoform epsilon; CKIE; CKIepsilon;
 HCKIE; CKIe; CKI-epsilon; MGC10398;

Gene ID

1454

mRNA Refseq

NM_001894

Protein Refseq

NP_001885

MIM

600863

UniProt ID

P49674

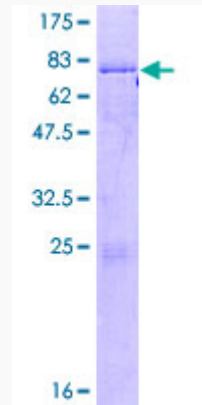
 Tel: 1-631-559-9269 1-516-512-3133

 Email: info@creative-biomart.com  Fax: 1-631-938-8127

 45-1 Ramsey Road, Shirley, NY 11967, USA

Quality Control

Testing:



12.5% SDS-PAGE Stained with Coomassie Blue.

 Tel: 1-631-559-9269 1-516-512-3133

 Email: info@creative-biomart.com  Fax: 1-631-938-8127

 45-1 Ramsey Road, Shirley, NY 11967, USA