

Recombinant Full Length Human CSNK1E Protein, C-Flag-tagged

Cat. No. CSNK1E-764HFL **Lot. No.** (See product label)

SPECIFICATION

Product Overview	Recombinant Full Length Human CSNK1E Protein, fused to Flag-tag at C-terminus, was expressed in Mammalian cells.
Species	Human
Source	Mammalian Cells
Description	<p>The protein encoded by this gene is a serine/threonine protein kinase and a member of the casein kinase I protein family, whose members have been implicated in the control of cytoplasmic and nuclear processes, including DNA replication and repair.</p> <p>The encoded protein is found in the cytoplasm as a monomer and can phosphorylate a variety of proteins, including itself. This protein has been shown to phosphorylate period, a circadian rhythm protein. Two transcript variants encoding the same protein have been found for this gene.</p>
Form	25 mM Tris HCl, pH 7.3, 100 mM glycine, 10% glycerol.
Molecular Mass	47.1 kDa
AA Sequence	<p>MELRVGNKYRLGRKIGSGSFGDIYLGANIASGEEVAIKLECVKTKHPQLHIESKFYKM MQGGVGIPSIKW CGAEGDYNVMVMELLGPSLEDLNFCSRKFSLKTVLLLADQMIS RIEYIHSKNFIHRDVKPDNFLMGLGK KGNLVYIIDFGLAKKYRDARTHQHIPPYRENKN LTGTARYASINTHLGIEQSRRDDLESLGYVLMYFNLGS LPWQGLKAATKRQKYERIS EKKMSTPIEVLCKGYPSEFSTYLNFCRSLRFDDKPDYSYLRQLFRNLFHRQ GFSYD</p>

 Tel: 1-631-559-9269 1-516-512-3133

 Email: info@creative-biomart.com  Fax: 1-631-938-8127

 45-1 Ramsey Road, Shirley, NY 11967, USA

YVFDWNMLKFGAARNPEDVDREERHEREERMGQLRGSATRALPPGPPTGATAN
 RLRSAAEPVAS TPASRIQPAGNTSPRAISRVDREKRVSMRLHRGAPANVSSSDLTG
 RQEVSRIPASQTSVPFDHLGKTRTRPLEQKLISEEDLAANDILDYKDDDDKV

Purity	> 80% as determined by SDS-PAGE and Coomassie blue staining.
Stability	Stable for 12 months from the date of receipt of the product under proper storage and handling conditions. Avoid repeated freeze-thaw cycles.
Storage	Store at -80 centigrade.
Concentration	>50 ug/mL as determined by microplate BCA method.
Preparation	Recombinant protein was captured through anti-DDK affinity column followed by conventional chromatography steps.
Protein Families	Druggable Genome, Protein Kinase
Protein Pathways	Circadian rhythm - mammal, Hedgehog signaling pathway, Wnt signaling pathway
Full Length	Full L.

GENE INFORMATION

Gene Name	CSNK1E casein kinase 1 epsilon [Homo sapiens (human)]
Official Symbol	CSNK1E
Synonyms	CKIε; HCKIE; CKIepsilon
Gene ID	1454

 Tel: 1-631-559-9269 1-516-512-3133

 Email: info@creative-biomart.com  Fax: 1-631-938-8127

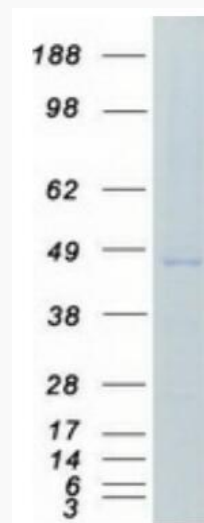
 45-1 Ramsey Road, Shirley, NY 11967, USA

mRNA Refseq [NM_152221.3](#)

Protein Refseq [NP_689407.1](#)

MIM [600863](#)

UniProt ID [P49674](#)



Coomassie blue staining of purified CSNK1E protein.

 Tel: 1-631-559-9269 1-516-512-3133

 Email: info@creative-biomart.com  Fax: 1-631-938-8127

 45-1 Ramsey Road, Shirley, NY 11967, USA