

Recombinant Human CSNK1G1 Protein, GST-tagged

Cat. No. CSNK1G1-1998H Lot. No. (See product label)

SPECIFICATION

Product Overview	Human CSNK1G1 partial ORF (AAH17236, 293 a.a. - 393 a.a.) recombinant protein with GST-tag at N-terminal.
Species	Human
Source	Wheat Germ
Description	This gene encodes a member of the casein kinase I gene family. This family is comprised of serine/threonine kinases that phosphorylate acidic proteins such as caseins. The encoded kinase plays a role in cell cycle checkpoint arrest in response to stalled replication forks by phosphorylating Claspin. A mutation in this gene may be associated with non-syndromic early-onset epilepsy (NSEOE). [provided by RefSeq, Jul 2016]
Molecular Mass	36.74 kDa
AA Sequence	KKGYTFDYAYDWVGRPIPTPVGSHVDSGASAITRESHTHRDRPSQQQPLRNQVV SSTNGELNVDDPTGAHSNAPITAHAEVEVVVEAKCCCFKRRKTKT
Applications	Enzyme-linked Immunoabsorbent Assay Western Blot (Recombinant protein) Antibody Production Protein Array
Notes	Best use within three months from the date of receipt of this protein.

 Tel: 1-631-559-9269 1-516-512-3133

 Email: info@creative-biomart.com  Fax: 1-631-938-8127

 45-1 Ramsey Road, Shirley, NY 11967, USA

Storage Store at -80 centigrade. Aliquot to avoid repeated freezing and thawing.

Storage Buffer 50 mM Tris-HCl, 10 mM reduced Glutathione, pH=8.0 in the elution buffer.

GENE INFORMATION

Gene Name CSNK1G1 casein kinase 1, gamma 1 [Homo sapiens]

Official Symbol CSNK1G1

Synonyms CSNK1G1; casein kinase 1, gamma 1; casein kinase I isoform gamma-1; CK1gamma1; CKI-gamma 1;

Gene ID 53944

mRNA Refseq NM_022048

Protein Refseq NP_071331

MIM 606274

UniProt ID Q9HCP0

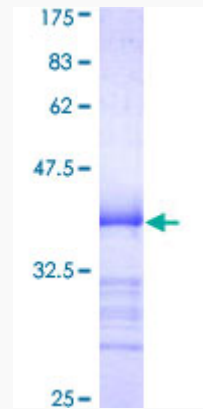
 Tel: 1-631-559-9269 1-516-512-3133

 Email: info@creative-biomart.com  Fax: 1-631-938-8127

 45-1 Ramsey Road, Shirley, NY 11967, USA

Quality Control

Testing:



12.5% SDS-PAGE Stained with Coomassie Blue.

 Tel: 1-631-559-9269 1-516-512-3133

 Email: info@creative-biomart.com  Fax: 1-631-938-8127

 45-1 Ramsey Road, Shirley, NY 11967, USA