

Recombinant Human CSNK1G2 protein, His-tagged

Cat. No. CSNK1G2-1332H Lot. No. (See product label)

SPECIFICATION

Product Overview	Recombinant Human CSNK1G2 protein(46-415 aa), fused with N-terminal His tag, was expressed in E.coli.
Species	Human
Source	E.coli
ProteinLength	46-415 aa
Form	The purified protein was lyophilized from sterile phosphate-buffered saline (PBS: 58 mM Na ₂ HPO ₄ , 17 mM NaH ₂ PO ₄ , 68 mM NaCl, pH 7.4). Prior to lyophilization, 5% (w/v) trehalose and 5% (w/v) mannitol were incorporated as cryoprotective excipients.
AASequence	FRVGKKIGCGNFGELRLGKNLYTNEYVAIKLEPIKSRAPQLHLEYRFYKQLSATEGVP QVYYFGPCGNYNAMVLELLGPSLEDLFDLCDRTFTLKTVLMIAIQLITRMEYVHTKSLI YRDVKPENFLVGRPGTKRQHAIHIIDFGLAKEYIDPETKKHIPYREHKSLTG TARYMSI NTHLGKEQSRRDDLEALGHMFMFLRGSLPWQGLKADTLKERYQKIGDTKRATPIE VLCENFPEEMATYLRVRRLDFFEKPDYDYLRLKLFDFDRSGFVFDYEYDWAGKP LPTPIGTVHTDLP SQPQLRDKTQPHSKNQALNSTNGELNADDPTAGHSNAPITAPAE VEVADETKCCCFKRRKRKSLQRHK
Purity	85%, by SDS-PAGE with Coomassie Brilliant Blue staining.
Storage	Store at 2-8°C for 1-2 weeks. Aliquot and store at -20°C to -80°C for up to 3 months,

 Tel: 1-631-559-9269 1-516-512-3133

 Email: info@creative-biomart.com  Fax: 1-631-938-8127

 45-1 Ramsey Road, Shirley, NY 11967, USA

reconstitution with sterile water and addition of an equal volume of glycerol. Avoid repeat freeze-thaw cycles.

Reconstitution

Dissolve the product in 200 µl sterile water to achieve a working concentration of 0.25 g/µl. If experimental compatibility allows, mix the aqueous solution with an equal volume of glycerol (1:1 ratio) after initial reconstitution.

GENE INFORMATION

Gene Name CSNK1G2 casein kinase 1, gamma 2 [Homo sapiens]

Official Symbol CSNK1G2

Synonyms CSNK1G2; casein kinase 1, gamma 2; casein kinase I isoform gamma-2; CK1g2; CKI-gamma 2; casein kinase 1 isoform gamma-2;

Gene ID 1455

mRNA Refseq NM_001319

Protein Refseq NP_001310

MIM 602214

UniProt ID P78368

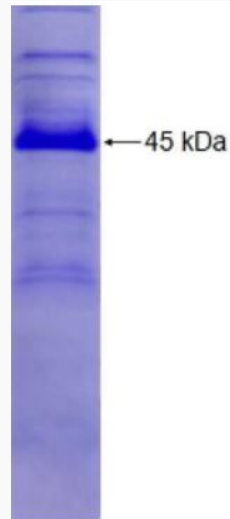
 Tel: 1-631-559-9269 1-516-512-3133

 Email: info@creative-biomart.com  Fax: 1-631-938-8127

 45-1 Ramsey Road, Shirley, NY 11967, USA



SDS-PAGE



Tel: 1-631-559-9269 1-516-512-3133

Email: info@creative-biomart.com Fax: 1-631-938-8127

45-1 Ramsey Road, Shirley, NY 11967, USA