

# Active Recombinant Human CSNK1G2 Protein, GST-tagged

**Cat. No.** CSNK1G2-1999H    **Lot. No.** (See product label)

## SPECIFICATION

<b>Product Overview</b>	Human CSNK1G2 (NP_001310.3, 1 a.a. - 415 a.a.) full-length recombinant protein with GST tag expressed in baculovirus infected Sf21 cells.
<b>Species</b>	Human
<b>Source</b>	Insect Cells
<b>Description</b>	CSNK1G2 (Casein Kinase 1 Gamma 2) is a Protein Coding gene. Among its related pathways are Signaling by Wnt and GPCR Pathway. GO annotations related to this gene include transferase activity, transferring phosphorus-containing groups and protein tyrosine kinase activity. An important paralog of this gene is CSNK1G3.
<b>Form</b>	Liquid
<b>Bio-activity</b>	The activity was measured by off-chip mobility shift assay. The enzyme was incubated with fluorescence-labeled substrate and Mg(or Mn)/ATP. The phosphorylated and unphosphorylated substrates were separated and detected by LabChip 3000. Substrate: CKtide. ATP: 100 uM.
<b>Molecular Mass</b>	74 kDa
<b>Purity</b>	95 % by SDS-PAGE/CBB staining
<b>Applications</b>	Functional Study SDS-PAGE

 Tel: 1-631-559-9269    1-516-512-3133

 Email: [info@creative-biomart.com](mailto:info@creative-biomart.com)     Fax: 1-631-938-8127

 45-1 Ramsey Road, Shirley, NY 11967, USA

**Storage** Store at -80 centigrade. Aliquot to avoid repeated freezing and thawing.

**Storage Buffer** In 50 mM Tris-HCl, 150 mM NaCl, pH 7.5 (0.1% CHAPS, 1 mM DTT, 10% glycerol)

## GENE INFORMATION

**Gene Name** CSNK1G2 casein kinase 1, gamma 2 [ Homo sapiens ]

**Official Symbol** CSNK1G2

**Synonyms** CSNK1G2; casein kinase 1, gamma 2; casein kinase I isoform gamma-2; CK1g2; CKI-gamma 2; casein kinase 1 isoform gamma-2;

**Gene ID** 1455

**mRNA Refseq** NM\_001319

**Protein Refseq** NP\_001310

**MIM** 602214

**UniProt ID** P78368

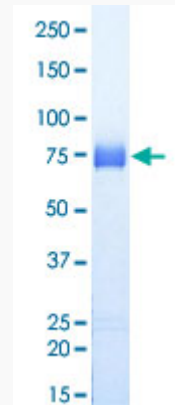
 Tel: 1-631-559-9269 1-516-512-3133

 Email: [info@creative-biomart.com](mailto:info@creative-biomart.com)  Fax: 1-631-938-8127

 45-1 Ramsey Road, Shirley, NY 11967, USA

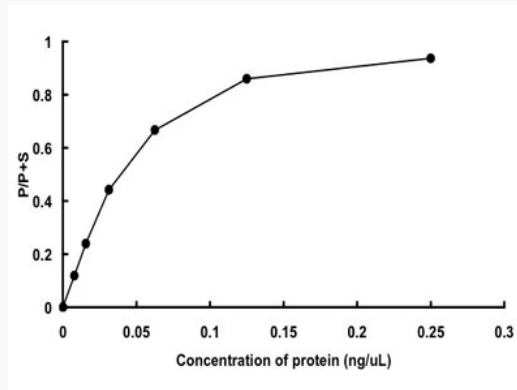
**Quality Control**

**Testing:**



Loading 1  $\mu$ g protein in SDS-PAGE

**Result of activity analysis**



 Tel: 1-631-559-9269 1-516-512-3133

 Email: [info@creative-biomart.com](mailto:info@creative-biomart.com)  Fax: 1-631-938-8127

 45-1 Ramsey Road, Shirley, NY 11967, USA