

Recombinant Human CSNK1G2 Protein, GST-tagged

Cat. No. CSNK1G2-2000H Lot. No. (See product label)

SPECIFICATION

Product Overview	Human CSNK1G2 full-length ORF (AAH20972.1, 1 a.a. - 415 a.a.) recombinant protein with GST-tag at N-terminal.
Species	Human
Source	Wheat Germ
Description	CSNK1G2 (Casein Kinase 1 Gamma 2) is a Protein Coding gene. Among its related pathways are Signaling by Wnt and GPCR Pathway. GO annotations related to this gene include transferase activity, transferring phosphorus-containing groups and protein tyrosine kinase activity. An important paralog of this gene is CSNK1G3.
Molecular Mass	71.39 kDa
AA Sequence	MDFDKKGGKGETEEGRMSKAGGGRSSHGIRSSGTSSGVLVMPNFRVGGKIGC GNFGELRLGKNLYTNEYVAIKLEPIKSRAPQLHLEYRFYKQLSATEGVPQVYFPGPC GNYNAMVLELLGPSLEDLFDLDCDRTFTLKTVLMIAIQLITRMEYVHTKSLIYRDVKPEN FLVGRPGTKRQHAIHIIDFGLAKEYIDPETKKHIPYREHKSLTGTARYMSINTHLGKEQ SRRDDLEALGHMFMFLRGSPLWQGLKADTLKERYQKIGDTRATPIEVLCEFP EMATYLRVRRLLDFFEKPDYDYLRLKFTDLFDRSGFVFDYEYDWAGKPLPTPIGT VDLPSQPQLRDKTQPHSKNQALNSTNGELNADDPTAGHSNAPITAPAEVEVADETK CCCFKRRKRKSLQRHK
Applications	Enzyme-linked Immunoabsorbent Assay Western Blot (Recombinant protein)

 Tel: 1-631-559-9269 1-516-512-3133

 Email: info@creative-biomart.com  Fax: 1-631-938-8127

 45-1 Ramsey Road, Shirley, NY 11967, USA

	Antibody Production Protein Array
Notes	Best use within three months from the date of receipt of this protein.
Storage	Store at -80 centigrade. Aliquot to avoid repeated freezing and thawing.
Storage Buffer	50 mM Tris-HCl, 10 mM reduced Glutathione, pH=8.0 in the elution buffer.
GENE INFORMATION	
Gene Name	CSNK1G2 casein kinase 1, gamma 2 [Homo sapiens]
Official Symbol	CSNK1G2
Synonyms	CSNK1G2; casein kinase 1, gamma 2; casein kinase I isoform gamma-2; CK1g2; CKI-gamma 2; casein kinase 1 isoform gamma-2;
Gene ID	1455
mRNA Refseq	NM_001319
Protein Refseq	NP_001310
MIM	602214
UniProt ID	P78368

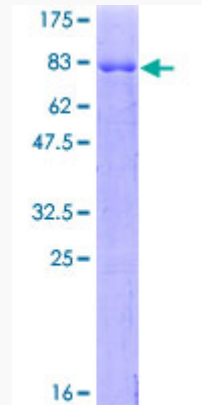
 Tel: 1-631-559-9269 1-516-512-3133

 Email: info@creative-biomart.com  Fax: 1-631-938-8127

 45-1 Ramsey Road, Shirley, NY 11967, USA

Quality Control

Testing:



12.5% SDS-PAGE Stained with Coomassie Blue.

 Tel: 1-631-559-9269 1-516-512-3133

 Email: info@creative-biomart.com  Fax: 1-631-938-8127

 45-1 Ramsey Road, Shirley, NY 11967, USA