

Recombinant Human CSNK2A1, His-tagged

Cat. No. CSNK2A1-199H Lot. No. (See product label)

SPECIFICATION

Product Overview	Recombinant human Protein Kinase Casein Kinase 2, fused to His tag at N-terminus, was expressed in <i>E.coli</i> and purified by using conventional chromatography techniques. MW = 47.3 kDa (411 aa).
Species	Human
Source	E.coli
Description	Protein Kinase Casein Kinase 2 (PKCK2, also called CK2) is a ubiquitous Ser/Thr kinase expressed in all eukaryotes. PKCK2 is a tetramer composed of two catalytic kinase domains, alpha subunits, and two identical regulatory beta subunits. It has been implicated in cell cycle control, DNA repair, regulation of the circadian rhythm, and other cellular processes.
Form	Liquid. In 20 mM Tris-HCl buffer (pH 8.0) containing 1 mM DTT, 500 mM NaCl, 50% glycerol.
Purity	> 90% by SDS - PAGE.
Concentration	1 mg/ml (determined by Bradford assay).
Sequences Of Amino Acids	MGSSHHHHH SGLVPRGSH MSGPVPSRAR VYTDVNTHRP REYWDYESHV VE WGNQDDYQ LVRKLGRGKY SEVFEAINIT NNEKVVVKIL KPVKKKKIKR EIKI LEN LRG GPNIITLADI VKDPVSRTPA LVFEHVNNTD FKQLYQTLTD YDIRFYMYEI LK AL DYCHSM GIMHRDVKPH NVMIDHEHRK LRLIDWGLAE FYHPGQEYNV RV AS

Tel: 1-631-559-9269 1-516-512-3133

Email: info@creative-biomart.com Fax: 1-631-938-8127

45-1 Ramsey Road, Shirley, NY 11967, USA

RY FKGP ELLVDYQMYD YSLDMWSLGC MLASMIFRKE PFFHGHHDNYD
 QLVRIAKVLG T E DLYDYIDK YNIELDPRFN DILGRHSRKR WERFVHSENQ
 HLVSPEALDF LD KL LR YDHQ SRLTAREAME HPYFYTVVKD QARMGSSSMP
 GGSTPVSSAN MM SG ISSVPT PSPLGPLAGS PVIAAANPLG MPVPAAAGAQ Q.

Storage

Can be stored at +4°C short term (1-2 weeks). For long term storage, aliquot and store at -20°C or -70°C. Avoid repeated freezing and thawing cycles.

GENE INFORMATION

Gene Name

[CSNK2A1 casein kinase 2, alpha 1 polypeptide \[Homo sapiens \]](#)

Synonyms

CSNK2A1; casein kinase 2, alpha 1 polypeptide; CKII; CK2A1; casein kinase II alpha 1 subunit; protein kinase CK2; CK2 catalytic subunit alpha; EC 2.7.11.1; OTTHUMP00000029925; OTTHUMP00000029926

Gene ID

[1457](#)

mRNA Refseq

[NM_001895](#)

Protein Refseq

[NP_001886](#)

MIM

[115440](#)

UniProt ID

[P68400](#)

Chromosome Location

20p13

Pathway

Adherens junction; Tight junction; Wnt signaling pathway

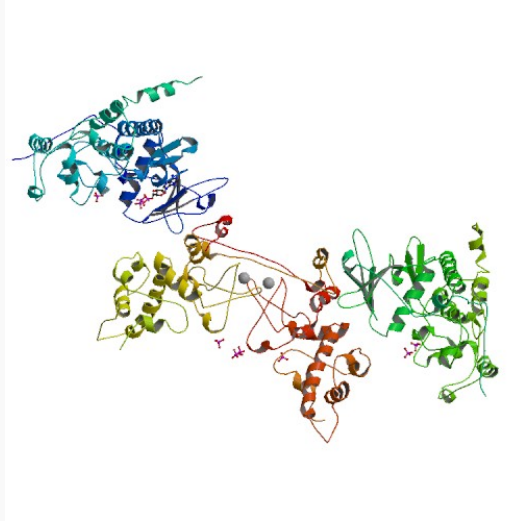
 Tel: 1-631-559-9269 1-516-512-3133

 Email: info@creative-biomart.com  Fax: 1-631-938-8127

 45-1 Ramsey Road, Shirley, NY 11967, USA

Function ATP binding; nucleotide binding; protein N-terminus binding; protein serine/threonine kinase activity; transferase activity

PDB rendering based on 1jwh.



 Tel: 1-631-559-9269 1-516-512-3133

 Email: info@creative-biomart.com  Fax: 1-631-938-8127

 45-1 Ramsey Road, Shirley, NY 11967, USA