

## Recombinant Human CSNK2A1 Protein, GST-tagged

Cat. No. CSNK2A1-2006H Lot. No. (See product label)

### SPECIFICATION

**Product Overview** Human CSNK2A1 full-length ORF ( NP\_001886.1, 1 a.a. - 391 a.a.) recombinant protein with GST-tag at N-terminal.

**Species** Human

**Source** Wheat Germ

**Description** Casein kinase II is a serine/threonine protein kinase that phosphorylates acidic proteins such as casein. It is involved in various cellular processes, including cell cycle control, apoptosis, and circadian rhythm. The kinase exists as a tetramer and is composed of an alpha, an alpha-prime, and two beta subunits. The alpha subunits contain the catalytic activity while the beta subunits undergo autophosphorylation. The protein encoded by this gene represents the alpha subunit. While this gene is found on chromosome 20, a related transcribed pseudogene is found on chromosome 11. Three transcript variants encoding two different proteins have been found for this gene. [provided by RefSeq, Jul 2014]

**Molecular Mass** 71.5 kDa

**AA Sequence** MSGPVPSRARVYTDVNTHRPREYWDYESHVVEWGNQDDYQLVRKLGKGYSEVF  
EAINITNNEKVVVKILKPVKKKKIKREIKILENLRGGPNIITLADIVKDPVSRTPALVFEHV  
NNTDFKQLYQTLTDYDIRFYMYEILKALDYCHSMGIMHRDVKPHNVMIDHEHRKLRLLI  
DWGLAEFYHPGQEYNVRVASRYFKGPELLVDYQMYDYSLDMWSLGCMLASMIFRK  
EPPFFHGHNDNYDQLVRIAKVLGTEDLYDYIDKYNIELDPRFNDILGRHSRKRWERFVH

 Tel: 1-631-559-9269 1-516-512-3133

 Email: [info@creative-biomart.com](mailto:info@creative-biomart.com)  Fax: 1-631-938-8127

 45-1 Ramsey Road, Shirley, NY 11967, USA

SENQHLVSPEALDFLDKLLRYDHQSRLTAREAMEHPYFYTVVKDQARMGSSSMPG  
GSTPVSSANMMSSGISSVPTPSPLGPLAGSPVIAAANPLGMPVPAAGAQQ

<b>Applications</b>	Enzyme-linked Immunoabsorbent Assay Western Blot (Recombinant protein) Antibody Production Protein Array
<b>Notes</b>	Best use within three months from the date of receipt of this protein.
<b>Storage</b>	Store at -80 centigrade. Aliquot to avoid repeated freezing and thawing.
<b>Storage Buffer</b>	50 mM Tris-HCl, 10 mM reduced Glutathione, pH=8.0 in the elution buffer.

## GENE INFORMATION

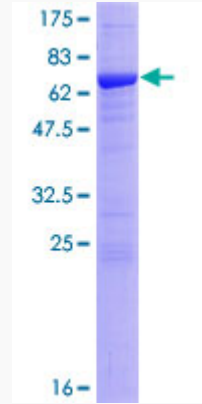
<b>Gene Name</b>	CSNK2A1 casein kinase 2, alpha 1 polypeptide [ Homo sapiens ]
<b>Official Symbol</b>	CSNK2A1
<b>Synonyms</b>	CSNK2A1; casein kinase 2, alpha 1 polypeptide; casein kinase II subunit alpha; CK II alpha; protein kinase CK2; CK2 catalytic subunit alpha; casein kinase II alpha 1 subunit; CKII; CK2A1;
<b>Gene ID</b>	1457
<b>mRNA Refseq</b>	NM_001895
<b>Protein Refseq</b>	NP_001886
<b>MIM</b>	115440

UniProt ID


P68400

Quality Control

Testing:



12.5% SDS-PAGE Stained with Coomassie Blue.

 Tel: 1-631-559-9269 1-516-512-3133

 Email: [info@creative-biomart.com](mailto:info@creative-biomart.com)  Fax: 1-631-938-8127

 45-1 Ramsey Road, Shirley, NY 11967, USA