

# Active Recombinant Full Length Human CSNK2A1 Protein, GST-tagged

**Cat. No.** CSNK2A1-2318HF    **Lot. No.** (See product label)

## SPECIFICATION

<b>Product Overview</b>	Full-length human CK2α1 [1-391(end) amino acids of accession number NP_001886.1] was co- expressed as N-terminal GST-fusion protein (72 kDa) with human His-tagged CK2β [1-215 amino acids of accession number NP_001311.3] using baculovirus expression system. GST-CK2α1 was purified by using glutathione sepharose chromatography.
<b>Species</b>	Human
<b>Source</b>	Sf21 Cells
<b>ProteinLength</b>	1-391(CK2a1), 1-215(CK2b)
<b>Form</b>	50 mM Tris-HCl, 150 mM NaCl, 0.05% Brij35, 1 mM DTT, 10% glycerol, pH7.5
<b>Bio-activity</b>	The activity was measured by off-chip mobility shift assay. The enzyme was incubated with fluorescence-labeled substrate and Mg(or Mn)/ATP. The phosphorylated and unphosphorylated substrates were separated and detected by LabChip™3000.
<b>Purity</b>	98%
<b>Applications</b>	SDS-PAGE
<b>Storage</b>	Store at -80C. Avoid repeating freeze-thaws.

 Tel: 1-631-559-9269    1-516-512-3133

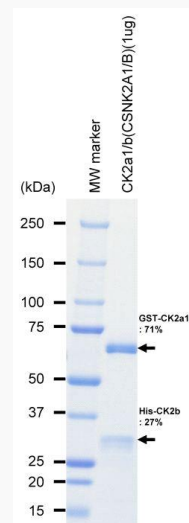
 Email: [info@creative-biomart.com](mailto:info@creative-biomart.com)     Fax: 1-631-938-8127

 45-1 Ramsey Road, Shirley, NY 11967, USA

## GENE INFORMATION

<b>Gene Name</b>	casein kinase 2, alpha 1 polypeptide
<b>Official Symbol</b>	CSNK2A1
<b>Synonyms</b>	CSNK2A1;CK2A1;CKII;Cka1;Cka2;OCNDS
<b>Protein Refseq</b>	<a href="#">NP_001886.1(CK2a1)</a> , <a href="#">NP_001311.3(Ck2b1)</a>
<b>UniProt ID</b>	<a href="#">P68400</a>

## SDS-PAGE

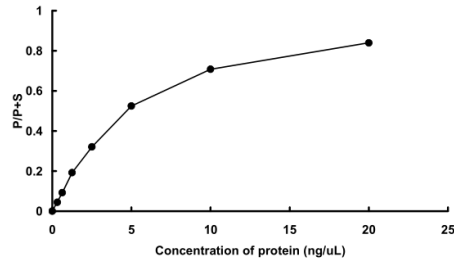


The purity was assessed by SDS-PAGE/CBB staining.

Tel: 1-631-559-9269 1-516-512-3133

Email: [info@creative-biomart.com](mailto:info@creative-biomart.com) Fax: 1-631-938-8127

45-1 Ramsey Road, Shirley, NY 11967, USA

**Activity data****Activity data**

The activity was measured by off-chip mobility shift assay. The enzyme was incubated with fluorescence-labeled substrate and Mg(or Mn)/ATP. The phosphorylated and unphosphorylated substrates were separated and detected by LabChip™3000.

 Tel: 1-631-559-9269 1-516-512-3133

 Email: [info@creative-biomart.com](mailto:info@creative-biomart.com)  Fax: 1-631-938-8127

 45-1 Ramsey Road, Shirley, NY 11967, USA