

Recombinant Human CSNK2A2 Protein, Full Length, N-His tagged

Cat. No. CSNK2A2-13HFL **Lot. No.** (See product label)

SPECIFICATION

Product Overview Recombinant human CSNK2A2 protein (Full Length), fused to His-tag at N-terminus, was expressed in E. coli and purified by using conventional chromatography techniques.

Species Human

Source E.coli

ProteinLength Full Length

Description Casein kinase 2 subunit alpha, also known as CSNK2A2, regulates numerous cellular processes, such as cell cycle progression, apoptosis and transcription, as well as viral infection. This protein may act as a regulatory node which integrates and coordinates numerous signals leading to an appropriate cellular response.

Form Liquid

Molecular Mass 43.7 kDa (374aa) confirmed by MALDI-TOF

AA Sequence MGSSHHHHHSSGLVPRGSHMGSHMPGPAAGSRARVYAEVNSLRSREYWDYEA
 HVPSWGNQDDYQLVRKLGKYGKSEVFEAINITNNERVVVKILKPKVKKKIKREVKILE
 NLRGGTNIKLIDTVKDPVSKTPALVFEYINNTDFKQLYQILTDFDIRFYMYELLKALDY
 CHSKGIMHRDVKPHNVMIDHQKQLRLIDWGLAEFYHPAQEYNVRVASRYFKGPEL
 LVDYQMYDYSLDMWSLGCMLASMIFRREPFFHGQDNYDQLVRIAKVLGTEELYGYL

 Tel: 1-631-559-9269 1-516-512-3133

 Email: info@creative-biomart.com  Fax: 1-631-938-8127

 45-1 Ramsey Road, Shirley, NY 11967, USA

KKYHIDLDPHFNDILGQHSRKRWENFIHSENRLVSPEALDLLDKLLRYDHQQRLTA
KEAMEHPYFYPVVKEQSQPCADNAVLSSGLTAAR

Purity > 85% by SDS-PAGE

Applications SDS-PAGE

Notes For research use only. This product is not intended or approved for human, diagnostics or veterinary use.

Storage Can be stored at +2 to +8 centigrade for 1 week. For long term storage, aliquot and store at -20 to -80 centigrade. Avoid repeated freezing and thawing cycles.

Concentration 0.5 mg/mL (determined by Bradford assay)

Storage Buffer 20mM Tris-HCl buffer (pH 8.0) containing 0.15M NaCl, 30% glycerol, 1mM DTT

References
 1. Keller D.M., et al. (2001) Mol. Cell. 7:283-292
 2. Sayed M., et al. (2001) Oncogene. 20:6994-7005

GENE INFORMATION

Gene Name CSNK2A2 casein kinase 2 alpha 2 [Homo sapiens (human)]

Official Symbol CSNK2A2

Synonyms CSNK2A2; casein kinase 2 alpha 2; CK2A2; CSNK2A1; CK2alpha'; casein kinase II subunit alpha'; CK II alpha'; casein kinase 2 alpha'; casein kinase 2, alpha prime polypeptide; EC 2.7.11.1

Gene ID 1459

 Tel: 1-631-559-9269 1-516-512-3133

 Email: info@creative-biomart.com  Fax: 1-631-938-8127

 45-1 Ramsey Road, Shirley, NY 11967, USA

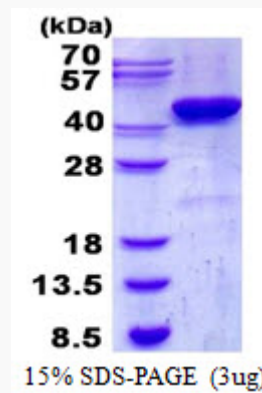
mRNA Refseq [NM_001896](#)

Protein Refseq [NP_001887](#)

MIM [115442](#)

UniProt ID [P19784](#)

SDS-PAGE



3 µg by SDS-PAGE under reducing condition and visualized by coomassie blue stain

 Tel: 1-631-559-9269 1-516-512-3133

 Email: info@creative-biomart.com  Fax: 1-631-938-8127

 45-1 Ramsey Road, Shirley, NY 11967, USA