

## Recombinant Human CSNK2A2 Protein, GST-tagged

**Cat. No.** CSNK2A2-2010H    **Lot. No.** (See product label)

### SPECIFICATION

<b>Product Overview</b>	Human CSNK2A2 full-length ORF ( AAH08812.1, 1 a.a. - 350 a.a.) recombinant protein with GST-tag at N-terminal.
<b>Species</b>	Human
<b>Source</b>	Wheat Germ
<b>Description</b>	<p>This gene encodes the alpha', or alpha 2, catalytic subunit of the protein kinase enzyme, casein kinase 2 (CK2). Casein kinase 2 is a serine/threonine protein kinase that phosphorylates acidic proteins such as casein. It is involved in various cellular processes, including cell cycle control, apoptosis, and circadian rhythms. This heterotetrameric kinase includes two catalytic subunits, either alpha or alpha', and two regulatory beta subunits. The closely related gene paralog encoding the alpha, or alpha 1 subunit (CSNK2A1, Gene ID: 1457) is found on chromosome 20. An intronic variant in this gene (alpha 2) may be associated with leukocyte telomere length in a South Asian population. A related transcribed pseudogene is found on chromosome 11. [provided by RefSeq, Aug 2017]</p>
<b>Molecular Mass</b>	64.13 kDa
<b>AA Sequence</b>	<p>MPGPAAGSRARVYAEVNSLRSEYWDYEAHVPSWGNQDDYQLVRKLGKGYSEV            FEAINITNNERVVVKILKPKVKKKIKREVKILENLRGGTNIILIDTVKDPVSKTPALVFE            YINNTDFKQLYQILTDIFDIRFYMYELLKALDYCHSKGIMHRDVKPHNVIMDHQQKCLR            LIDWGLAEFYHPAQEYNVRVASRYFKGPELLVDYQMYDYSLDMWSLGCMLASMIFR</p>

 Tel: 1-631-559-9269    1-516-512-3133

 Email: [info@creative-biomart.com](mailto:info@creative-biomart.com)     Fax: 1-631-938-8127

 45-1 Ramsey Road, Shirley, NY 11967, USA

REPFHGGQDNYDQLVRIAKVLGTEELYGYLKKYHIDLDPHFNDILGQHSRKRWENFI  
 HSENRLVLSPEALDLLDKLLRYDHQQRLTAKEAMEHPYFYPVVKEQSQPCADNAVL  
 SSSLTAAR

**Applications**

- Kinase Assay
- Enzyme-linked Immunoabsorbent Assay
- Western Blot (Recombinant protein)
- Antibody Production
- Protein Array

**Notes** Best use within three months from the date of receipt of this protein.

**Storage** Store at -80 centigrade. Aliquot to avoid repeated freezing and thawing.

**Storage Buffer** 50 mM Tris-HCl, 10 mM reduced Glutathione, pH=8.0 in the elution buffer.

## GENE INFORMATION

**Gene Name** CSNK2A2 casein kinase 2, alpha prime polypeptide [ Homo sapiens ]

**Official Symbol** CSNK2A2

**Synonyms** CSNK2A2; casein kinase 2, alpha prime polypeptide; casein kinase II subunit alpha; CSNK2A1; CK II alpha; CK2A2; FLJ43934;

**Gene ID** 1459

**mRNA Refseq** NM\_001896

**Protein Refseq** NP\_001887

 Tel: 1-631-559-9269 1-516-512-3133

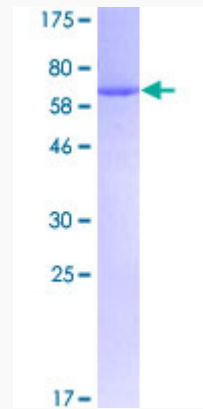
 Email: [info@creative-biomart.com](mailto:info@creative-biomart.com)  Fax: 1-631-938-8127

 45-1 Ramsey Road, Shirley, NY 11967, USA

**MIM** 115442

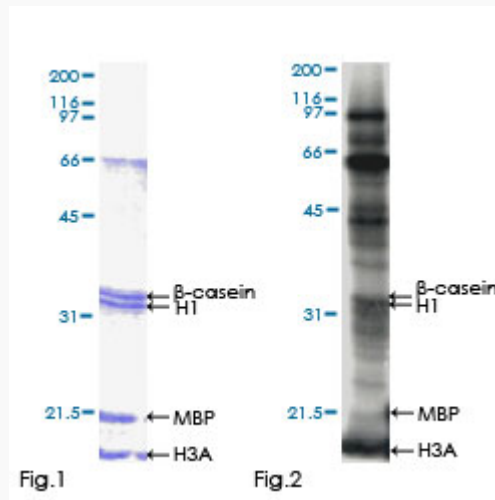
**UniProt ID** P19784

**Quality Control Testing:**



12.5% SDS-PAGE Stained with Coomassie Blue.

**Kinase Assay**



Tel: 1-631-559-9269 1-516-512-3133

Email: [info@creative-biomart.com](mailto:info@creative-biomart.com) Fax: 1-631-938-8127

45-1 Ramsey Road, Shirley, NY 11967, USA