

Recombinant Human CSNK2A2 protein

Cat. No. CSNK2A2-3226H **Lot. No.** (See product label)

SPECIFICATION

Product Overview	Recombinant Human CSNK2A2 protein(NP_001887.1) (Met 1-Arg 350) was expressed and purified in Insect Cells with two additional amino acids (Gly &) at the N-terminus.
Species	Human
Source	Insect Cells
ProteinLength	1-350 aa
Form	Lyophilized from sterile 20mM Tris, 500mM NaCl, 3mM DTT, pH 8.5.
Molecular Mass	The secreted recombinant human CSNK2A2 consists of 352 amino acids and predicts a molecular mass of 41.4 KDa. The apparent molecular mass of the protein is approximately 39 KDa in SDS-PAGE under reducing conditions due to glycosylation.
Endotoxin	< 1.0 EU per µg of the protein as determined by the LAL method.
Purity	> 95 % as determined by SDS-PAGE
Storage	Store it under sterile conditions at -20°C to -80°C upon receiving. Recommend to aliquot the protein into smaller quantities for optimal storage. Avoid repeated freeze-thaw cycles.
Reconstitution	It is recommended that sterile water be added to the vial to prepare a stock solution of

 Tel: 1-631-559-9269 1-516-512-3133

 Email: info@creative-biomart.com  Fax: 1-631-938-8127

 45-1 Ramsey Road, Shirley, NY 11967, USA

0.2 ug/ul. Centrifuge the vial at 4°C before opening to recover the entire contents.

protein Refseq-Weblink http://www.ncbi.nlm.nih.gov/protein/NP_001887.1

Unit ID P19784

Unit ID-Weblink <http://www.uniprot.org/uniprot/P19784>

GENE INFORMATION

Gene Name CSNK2A2 casein kinase 2, alpha prime polypeptide [Homo sapiens]

Official Symbol CSNK2A2

Synonyms CSNK2A2; casein kinase 2, alpha prime polypeptide; casein kinase II subunit alpha; CSNK2A1; CK II alpha; CK2A2; FLJ43934;

Gene ID 1459

mRNA Refseq [NM_001896](#)

protein Refseq NP_001887

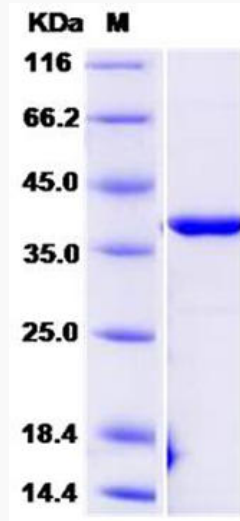
MIM 115442

 Tel: 1-631-559-9269 1-516-512-3133

 Email: info@creative-biomart.com  Fax: 1-631-938-8127

 45-1 Ramsey Road, Shirley, NY 11967, USA

SDS-PAGE



 Tel: 1-631-559-9269 1-516-512-3133

 Email: info@creative-biomart.com  Fax: 1-631-938-8127

 45-1 Ramsey Road, Shirley, NY 11967, USA