

Active Recombinant Full Length Human CSNK2A2 Protein, GST-tagged

Cat. No. CSNK2A2-4925HF Lot. No. (See product label)

SPECIFICATION

Product Overview	Full-length human CK2α2 [1-350(end) amino acids of accession number NP_001887.1] was co- expressed as N-terminal GST-fusion protein (68 kDa) with human His-tagged CK2β [1-215 amino acids of accession number NP_001311.3] using baculovirus expression system. GST-CK2α2 was purified by using glutathione sepharose chromatography.
Species	Human
Source	Sf21 Cells
ProteinLength	1-350(CK2a2), 1-215(CK2b)
Form	50 mM Tris-HCl, 150 mM NaCl, 0.05% Brij35, 1 mM DTT, 10% glycerol, pH7.5
Bio-activity	The activity was measured by off-chip mobility shift assay. The enzyme was incubated with fluorescence-labeled substrate and Mg(or Mn)/ATP. The phosphorylated and unphosphorylated substrates were separated and detected by LabChip™3000.
Purity	97%
Applications	SDS-PAGE
Storage	Store at -80C. Avoid repeating freeze-thaws.

 Tel: 1-631-559-9269 1-516-512-3133

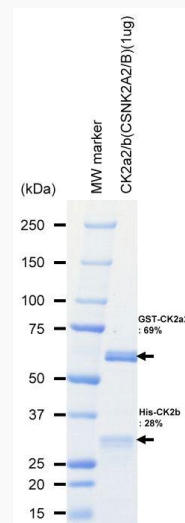
 Email: info@creative-biomart.com  Fax: 1-631-938-8127

 45-1 Ramsey Road, Shirley, NY 11967, USA

GENE INFORMATION

Gene Name	casein kinase 2, alpha prime polypeptide
Official Symbol	CSNK2A2
Synonyms	CSNK2A2;CK2A2;CK2alpha';CSNK2A1
Protein Refseq	NP_0011887.1(CK2a2) , NP_001311.3(Ck2b1)
UniProt ID	P19784

SDS-PAGE

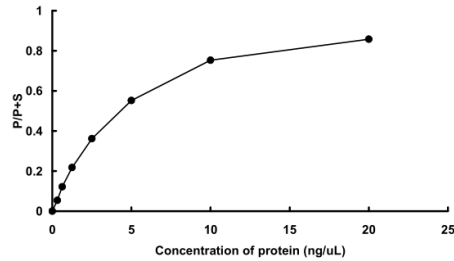


The purity was assessed by SDS-PAGE/CBB staining.

Tel: 1-631-559-9269 1-516-512-3133

Email: info@creative-biomart.com Fax: 1-631-938-8127

45-1 Ramsey Road, Shirley, NY 11967, USA

Activity data**Activity data**

The activity was measured by off-chip mobility shift assay. The enzyme was incubated with fluorescence-labeled substrate and Mg(or Mn)/ATP. The phosphorylated and unphosphorylated substrates were separated and detected by LabChip™3000.

 Tel: 1-631-559-9269 1-516-512-3133

 Email: info@creative-biomart.com  Fax: 1-631-938-8127

 45-1 Ramsey Road, Shirley, NY 11967, USA