

## Recombinant Human CSNK2B Protein

**Cat. No.** CSNK2B-08H    **Lot. No.** (See product label)

### SPECIFICATION

<b>Product Overview</b>	Recombinant human CK2beta (1-215aa) without tag was expressed in E. coli and purified by using conventional chromatography techniques.
<b>Species</b>	Human
<b>Source</b>	E.coli
<b>ProteinLength</b>	1-215 a.a.
<b>Description</b>	This gene encodes the beta subunit of casein kinase II, a ubiquitous protein kinase which regulates metabolic pathways, signal transduction, transcription, translation, and replication. The enzyme is composed of three subunits, alpha, alpha prime and beta, which form a tetrameric holoenzyme. The alpha and alpha prime subunits are catalytic, while the beta subunit serves regulatory functions. The enzyme localizes to the endoplasmic reticulum and the Golgi apparatus. Two transcript variants encoding different isoforms have been found for this gene.
<b>Form</b>	Liquid
<b>Molecular Mass</b>	24.9 kDa confirmed by MALDI-TOF
<b>Identity</b>	215aa
<b>AA Sequence</b>	MSSSEEVSWISWFCGLRGNEFFCEVDEDEYIQDKFNLTGLNEQVPHYRQALDMILDLEPDEELEDNPNQSDLIEQAAEMLYGLIHARYILTNRGIAQMLEKYQQGDFGYCPRVY

 Tel: 1-631-559-9269    1-516-512-3133

 Email: [info@creative-biomart.com](mailto:info@creative-biomart.com)     Fax: 1-631-938-8127

 45-1 Ramsey Road, Shirley, NY 11967, USA

CENQPMLPIGLSDIPGEAMVKLYCPKCMDVYTPKSSRHHHTDGAYFGTGFPHMLFM  
VHPEYRPKR PANQFVPRLYGFKIHPMAYQLQLQAASNFKSPVKTIR

**Purity** > 95% by SDS-PAGE

**Applications** SDS-PAGE

**Storage** Can be stored at 2 to 8 centigrade for 1 week. For long term storage, aliquot and store at -20 to -80 centigrade. Avoid repeated freezing and thawing cycles.

**Concentration** 1 mg/mL (determined by Bradford assay)

**Storage Buffer** 20mM Tris-HCl buffer (pH 8.0) containing 10% glycerol, 0.2M NaCl, 1mM DTT, 1mM EDTA

## GENE INFORMATION

**Gene Name** CSNK2B casein kinase 2 beta [ Homo sapiens (human) ]

**Official Symbol** CSNK2B

**Synonyms** CSNK2B; casein kinase 2 beta; G5A; CK2B; CK2N; Ckb1; Ckb2; CSK2B; POBINDS; casein kinase II subunit beta; CK II beta; CSNK2B-LY6G5B-1072; CSNK2B-LY6G5B-1103; CSNK2B-LY6G5B-532; CSNK2B-LY6G5B-560; CSNK2B-LY6G5B-562; Casein kinase II beta subunit; alternative name: G5a, phosvitin; casein kinase 2, beta polypeptide; phosvitin; protein G5a; EC 2.7.11.1

**Gene ID** 1460

**mRNA Refseq** NM\_001320

 Tel: 1-631-559-9269 1-516-512-3133

 Email: [info@creative-biomart.com](mailto:info@creative-biomart.com)  Fax: 1-631-938-8127

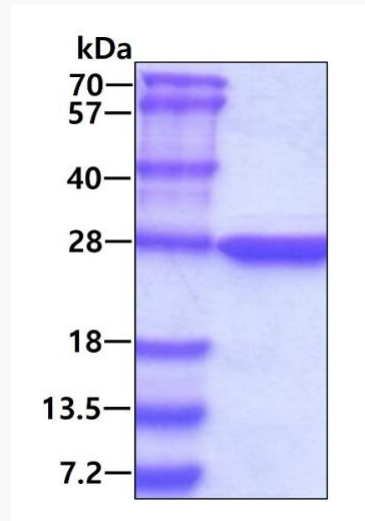
 45-1 Ramsey Road, Shirley, NY 11967, USA

**Protein Refseq** NP\_001311

**MIM** 115441

**UniProt ID** P67870

**SDS-PAGE**



3  $\mu$ g by SDS-PAGE under reducing condition and visualized by coomassie blue stain.

 Tel: 1-631-559-9269 1-516-512-3133

 Email: [info@creative-biomart.com](mailto:info@creative-biomart.com)  Fax: 1-631-938-8127

 45-1 Ramsey Road, Shirley, NY 11967, USA