

## Recombinant Human CSNK2B Protein, GST-tagged

Cat. No. CSNK2B-2013H Lot. No. (See product label)

### SPECIFICATION

<b>Product Overview</b>	Human CSNK2B full-length ORF ( NP_001311.3, 1 a.a. - 215 a.a.) recombinant protein with GST-tag at N-terminal.
<b>Species</b>	Human
<b>Source</b>	Wheat Germ
<b>Description</b>	This gene encodes the beta subunit of casein kinase II, a ubiquitous protein kinase which regulates metabolic pathways, signal transduction, transcription, translation, and replication. The enzyme is composed of three subunits, alpha, alpha prime and beta, which form a tetrameric holoenzyme. The alpha and alpha prime subunits are catalytic, while the beta subunit serves regulatory functions. The enzyme localizes to the endoplasmic reticulum and the Golgi apparatus. Two transcript variants encoding different isoforms have been found for this gene. [provided by RefSeq, Sep 2013]
<b>Molecular Mass</b>	51.3 kDa
<b>AA Sequence</b>	MSSSEEVSWISWFCGLRGNEFFCEVDEDIQDKFNLTGLNEQVPHYRQALDMILDL EPDEELEDNPNQSDLIEQAEMLYGLIHARYILTNRGIAQMLEKYQQGDFGYCPRVY CENQPMLPIGLSDIPGEAMVKLYCPKCMDVYTPKSSRHHHTDGAYFGTGFPHMLFM VHPEYRPKR PANQFVPRLYGFKIHPMAYQLQLQAASNFKSPVKTIR
<b>Applications</b>	Enzyme-linked Immunoabsorbent Assay Western Blot (Recombinant protein) Antibody Production

 Tel: 1-631-559-9269 1-516-512-3133

 Email: [info@creative-biomart.com](mailto:info@creative-biomart.com)  Fax: 1-631-938-8127

 45-1 Ramsey Road, Shirley, NY 11967, USA

**Protein Array**

<b>Notes</b>	Best use within three months from the date of receipt of this protein.
<b>Storage</b>	Store at -80 centigrade. Aliquot to avoid repeated freezing and thawing.
<b>Storage Buffer</b>	50 mM Tris-HCl, 10 mM reduced Glutathione, pH=8.0 in the elution buffer.

**GENE INFORMATION**

<b>Gene Name</b>	CSNK2B casein kinase 2, beta polypeptide [ Homo sapiens ]
<b>Official Symbol</b>	CSNK2B
<b>Synonyms</b>	CSNK2B; casein kinase 2, beta polypeptide; casein kinase II subunit beta; phosvitin; CK II beta; protein G5a; Casein kinase II beta subunit; alternative name: G5a, phosvitin; G5A; CK2B; CK2N; CSK2B; MGC138222; MGC138224;
<b>Gene ID</b>	1460
<b>mRNA Refseq</b>	NM_001320
<b>Protein Refseq</b>	NP_001311
<b>MIM</b>	115441
<b>UniProt ID</b>	P67870

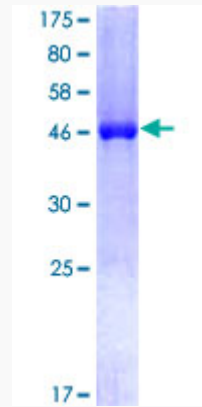
 Tel: 1-631-559-9269 1-516-512-3133

 Email: [info@creative-biomart.com](mailto:info@creative-biomart.com)  Fax: 1-631-938-8127

 45-1 Ramsey Road, Shirley, NY 11967, USA

**Quality Control**

**Testing:**



12.5% SDS-PAGE Stained with Coomassie Blue.

 Tel: 1-631-559-9269 1-516-512-3133

 Email: [info@creative-biomart.com](mailto:info@creative-biomart.com)  Fax: 1-631-938-8127

 45-1 Ramsey Road, Shirley, NY 11967, USA