

Recombinant Human CSPG4 Protein, His-tagged

Cat. No. CSPG4-858H Lot. No. (See product label)

SPECIFICATION

Product Overview	Recombinant Human CSPG4 Protein(His559~Pro776), fused wit His tag, was expressed in E. coli.
Species	Human
Source	E.coli
ProteinLength	His559~Pro776
Form	20mM Tris, 150mM NaCl, pH8.0, containing 1mM EDTA, 1mM DTT, 0.01% SKL, 5% Trehalose and Proclin300.
Molecular Mass	31kDa
Endotoxin	<1.0EU per 1g (determined by the LAL method)
Purity	> 95%
Storage	Avoid repeated freeze/thaw cycles. Store at 2-8°C for one month. Aliquot and store at -80°C for 12 months.
Reconstitution	Reconstitute in 20mM Tris, 150mM NaCl (pH8.0) to a concentration of 0.1-1.0 mg/mL. Do not vortex.

GENE INFORMATION

 Tel: 1-631-559-9269 1-516-512-3133

 Email: info@creative-biomart.com  Fax: 1-631-938-8127

 45-1 Ramsey Road, Shirley, NY 11967, USA

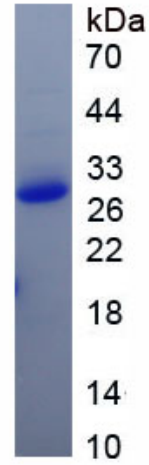
Gene Name	CSPG4 chondroitin sulfate proteoglycan 4 [Homo sapiens (human)]
Official Symbol	CSPG4
Synonyms	CSPG4; chondroitin sulfate proteoglycan 4; chondroitin sulfate proteoglycan 4 (melanoma associated); HMW MAA; MCSP; MCSPG; MEL CSPG; melanoma associated chondroitin sulfate proteoglycan; MSK16; NG2; chondroitin sulfate proteoglycan NG2; melanoma chondroitin sulfate proteoglycan; melanoma-associated chondroitin sulfate proteoglycan; chondroitin sulfate proteoglycan 4 (melanoma-associated); HMW-MAA; MEL-CSPG
Gene ID	1464
mRNA Refseq	NM_001897
Protein Refseq	NP_001888
MIM	601172
UniProt ID	Q6UVK1

 Tel: 1-631-559-9269 1-516-512-3133

 Email: info@creative-biomart.com  Fax: 1-631-938-8127

 45-1 Ramsey Road, Shirley, NY 11967, USA

SDS-PAGE



 Tel: 1-631-559-9269 1-516-512-3133

 Email: info@creative-biomart.com  Fax: 1-631-938-8127

 45-1 Ramsey Road, Shirley, NY 11967, USA