

Recombinant Human CSPG5 Protein, GST-tagged

Cat. No. CSPG5-2015H Lot. No. (See product label)

SPECIFICATION

Product Overview	Human CSPG5 partial ORF (NP_006565, 445 a.a. - 539 a.a.) recombinant protein with GST-tag at N-terminal.
Species	Human
Source	Wheat Germ
Description	The protein encoded by this gene is a proteoglycan that may function as a neural growth and differentiation factor. Several transcript variants encoding different isoforms have been found for this gene. [provided by RefSeq, May 2011]
Molecular Mass	36.19 kDa
AA Sequence	KKLYLLKTENTKLRRTNKFRTTPSELHNDNFSLSTIAEGSHPNDDPSAPHKIQEVLKSC LKEEESFNIQNSMSPKLEGGKGDQADLDVNCLQNNLT
Applications	Enzyme-linked Immunoabsorbent Assay Western Blot (Recombinant protein) Antibody Production Protein Array
Notes	Best use within three months from the date of receipt of this protein.
Storage	Store at -80 centigrade. Aliquot to avoid repeated freezing and thawing.

 Tel: 1-631-559-9269 1-516-512-3133

 Email: info@creative-biomart.com  Fax: 1-631-938-8127

 45-1 Ramsey Road, Shirley, NY 11967, USA

Storage Buffer 50 mM Tris-HCl, 10 mM reduced Glutathione, pH=8.0 in the elution buffer.

GENE INFORMATION

Gene Name CSPG5 chondroitin sulfate proteoglycan 5 (neuroglycan C) [Homo sapiens]

Official Symbol CSPG5

Synonyms CSPG5; chondroitin sulfate proteoglycan 5 (neuroglycan C); chondroitin sulfate proteoglycan 5; NGC; acidic leucine-rich EGF-like domain-containing brain protein; MGC44034;

Gene ID 10675

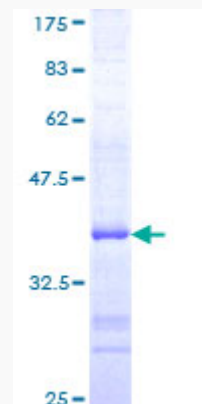
mRNA Refseq NM_001206942

Protein Refseq NP_001193871

MIM 606775

UniProt ID O95196

Quality Control Testing:



 Tel: 1-631-559-9269 1-516-512-3133

 Email: info@creative-biomart.com  Fax: 1-631-938-8127

 45-1 Ramsey Road, Shirley, NY 11967, USA



12.5% SDS-PAGE Stained with Coomassie Blue.

 Tel: 1-631-559-9269 1-516-512-3133

 Email: info@creative-biomart.com  Fax: 1-631-938-8127

 45-1 Ramsey Road, Shirley, NY 11967, USA