

Recombinant Escherichia coli CSRA Protein (1-61 aa), His-SUMO-tagged

Cat. No. CSRA-1912E **Lot. No.** (See product label)

SPECIFICATION

Product Overview	Recombinant Escherichia coli (strain K12/DH10B) CSRA Protein (1-61 aa) is produced by E. coli expression system. This protein is fused with a 6xHis-SUMO tag at the N-terminal. Protein Description: Full Length.
Species	E.coli
Source	E.coli
ProteinLength	1-61 aa
Description	Affects glycogen biosynthesis, gluconeogenesis, cell size and surface properties. Regulates glycogen synthesis under both aerobic and anaerobic conditions. Seems to accelerate the degradation of glg gene transcripts, potentially through selective RNA binding. Acts to inhibit interaction between the LetD protein and the A subunit of DNA gyrase. Also required for motility and flagellum biosynthesis through the post-transcriptional activation of flhDC expression. This involves binding to and stabilization of the flhDC message by CsrA.
Form	Tris-based buffer,50% glycerol
Molecular Mass	22.9 kDa
AA Sequence	MLILTRRVGETLMIGDEVTVTVLGVKGNQVRIGVNPAPKEVSVHREEIYQRIQAESQSSSY

 Tel: 1-631-559-9269 1-516-512-3133

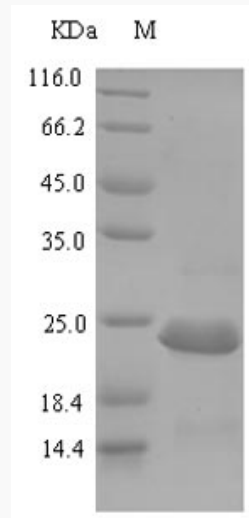
 Email: info@creative-biomart.com  Fax: 1-631-938-8127

 45-1 Ramsey Road, Shirley, NY 11967, USA

Purity	> 90% as determined by SDS-PAGE.
Notes	Repeated freezing and thawing is not recommended. Store working aliquots at 4 centigrade for up to one week.
Storage	The shelf life is related to many factors, storage state, buffer ingredients, storage temperature and the stability of the protein itself. Generally, the shelf life of liquid form is 6 months at -20 centigrade/-80 centigrade. The shelf life of lyophilized form is 12 months at -20 centigrade/-80 centigrade.
Concentration	A hardcopy of COA with reconstitution instruction is sent along with the products.

GENE INFORMATION

Synonyms	csrA; Secreted effector is Csra;
UniProt ID	B1XCM4



 Tel: 1-631-559-9269 1-516-512-3133

 Email: info@creative-biomart.com  Fax: 1-631-938-8127

 45-1 Ramsey Road, Shirley, NY 11967, USA



(Tris-Glycine gel) Discontinuous SDS-PAGE (reduced) with 5% enrichment gel and 15% separation gel.

 Tel: 1-631-559-9269 1-516-512-3133

 Email: info@creative-biomart.com  Fax: 1-631-938-8127

 45-1 Ramsey Road, Shirley, NY 11967, USA