

Recombinant Full Length Human CSRP1 Protein, C-Flag-tagged

Cat. No. CSRP1-1234HFL **Lot. No.** (See product label)

SPECIFICATION

Product Overview

Recombinant Full Length Human CSRP1 Protein, fused to Flag-tag at C-terminus, was expressed in Mammalian cells.

Species

Human

Source

Mammalian Cells

Description

This gene encodes a member of the cysteine-rich protein (CSRP) family. This gene family includes a group of LIM domain proteins, which may be involved in regulatory processes important for development and cellular differentiation. The LIM/double zinc-finger motif found in this gene product occurs in proteins with critical functions in gene regulation, cell growth, and somatic differentiation. Alternatively spliced transcript variants have been described.

Form

25 mM Tris HCl, pH 7.3, 100 mM glycine, 10% glycerol.

Molecular Mass

20.4 kDa

AA Sequence

MPNWGGGKCKGVCQKTVYFAEEVQCEGNSFHKSCFLCMVCKKNLDSTTVAVHGE
EYCKSCYGGKYGPKG YGYGQGAGTLSTDKGESLGIKHEEAPGHRPTTNPASKFA
QKIGGSERCPRCSQAVYAAEKVIGAGKSWH
KACFRCAKCGKLESTTLADKDG EYCKGCYAKNFGPKGFGFGQGAGALVHSETRT
RPLEQKLISEEDLAANDILDYKDDDDKV

 Tel: 1-631-559-9269 1-516-512-3133

 Email: info@creative-biomart.com  Fax: 1-631-938-8127

 45-1 Ramsey Road, Shirley, NY 11967, USA

Purity	> 80% as determined by SDS-PAGE and Coomassie blue staining.
Stability	Stable for 12 months from the date of receipt of the product under proper storage and handling conditions. Avoid repeated freeze-thaw cycles.
Storage	Store at -80 centigrade.
Concentration	>50 ug/mL as determined by microplate BCA method.
Preparation	Recombinant protein was captured through anti-DDK affinity column followed by conventional chromatography steps.
Full Length	Full L.

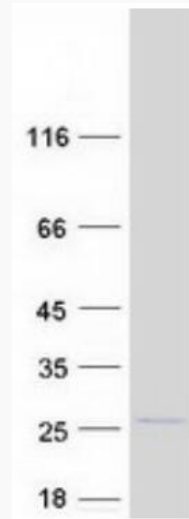
GENE INFORMATION

Gene Name	CSRP1 cysteine and glycine rich protein 1 [Homo sapiens (human)]
Official Symbol	CSRP1
Synonyms	CRP; CRP1; CSRP; CYRP; D1S181E; HEL-141; HEL-S-286
Gene ID	1465
mRNA Refseq	NM_004078.3
Protein Refseq	NP_004069.1
MIM	123876
UniProt ID	P21291

 Tel: 1-631-559-9269 1-516-512-3133

 Email: info@creative-biomart.com  Fax: 1-631-938-8127

 45-1 Ramsey Road, Shirley, NY 11967, USA



Coomassie blue staining of purified CSRP1 protein.

 Tel: 1-631-559-9269 1-516-512-3133

 Email: info@creative-biomart.com  Fax: 1-631-938-8127

 45-1 Ramsey Road, Shirley, NY 11967, USA